

OLLI

WINTER 2024



Supporting the community where our clients live, work, play, and retire.

As an independent, trusted, local firm for over 30 years, our commitment to the community is stronger than ever.

Our team advocates and supports area non-profits, greenways, the arts, and athletic events, and we are honored to have a part in building a community that's a wonderful place to live, work, play – and ultimately enjoy a fulfilling retirement.

Located in Ann Arbor, we're one of the top investment advisors in the area. We coordinate retirement strategies, assist with estate planning, select investments, and can manage your university TIAA, Fidelity, and other investment accounts without transferring assets.

Learn about our team and strategies to help grow and preserve your wealth.
734-769-7727 | risadvisory.com



Retirement Income Solutions

Helping to grow and preserve your wealth



2301 Platt Road, Suite 300
Ann Arbor, Michigan 48104

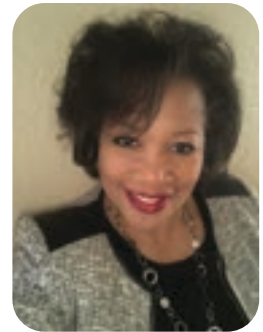
© 2023 Advisory services offered through Retirement Income Solutions, Inc. an Independent Investment Advisor registered with the U.S. Securities and Exchange Commission. Not affiliated with TIAA, Fidelity or any university.

Welcome to the New OLLI Year

A Note From OLLI's Leadership

WELCOME TO OLLI AT THE UNIVERSITY OF MICHIGAN!

Season's Greetings and welcome to the OLLI's Winter 2024 programming season! For those of you who are new, OLLI stands for the Osher Lifelong Learning Institute. We are a volunteer-centered membership organization in that we offer programs for older adults, designed by older adults. We are here for anyone who wants to be a lifelong learner. To those of you familiar with us, you know that OLLI creates tremendous value for our community, enriching our lives through engagement, friendship, and fun and we hope you will share OLLI's value with friends and family. We look forward to your continued and growing involvement and would be delighted if you would become a volunteer.



*Angela Bingham,
OLLI Director*

We want to thank our volunteers who share their passions, expertise, and skills to create the amazing programming offered. Our success is because of you! Any OLLI member can become a volunteer. Please connect with us to see how we can enrich your OLLI experience. We look forward to getting to know you in this year's educational and social activities and we hope that everyone will share your creative ideas - new programming and other ways that we can together make OLLI a key component of our members' happy, and healthy lives.

Please join us at the Winter Open House, Friday, January 5, 2024, 9:30 a.m. in the Morris Lawrence Building Atrium of Washtenaw Community College (WCC).

OLLI, WHERE LEARNING NEVER RETIRES!





Your Guide to OLLI-UM

Where Learning Never Retires!

We invite you to become part of the OLLI-UM community of lifelong learners! Our members enjoy learning and socializing in many different ways, so we have developed a vast array of programs to meet your interests and needs.

HERE IS A QUICK GUIDE TO HELP YOU DISCOVER ALL THAT OLLI-UM HAS TO OFFER.

Lectures

Enjoy lectures almost every week, year-round. Academic and professional experts speak on a wide range of cutting-edge social and political issues, science and technology, music, and the arts. Our teleconference lectures include weekly Thursday Lecture Series and monthly Distinguished Lecture Series.

Study Groups

Do you prefer to learn in small groups? Do you enjoy meeting people who share your interests? Join a study group! Have fun perusing the sixty or so study groups in this catalog and choose from a wide selection of topics.

Evenings with OLLI

Enjoy the lighter side of Ann Arbor and beyond as we explore Michigan together. Our monthly programs feature interesting people, places, and current issues within our community, as well as highlight the compelling stories of local personalities.

Volunteer at OLLI!

We need you! Please join our more than 200 active volunteers who impact every part of our program. Serve on a committee or plan a lecture or special event. Whatever your interest, OLLI-UM has meaningful opportunities for service and engagement.

Social Interaction

Engaging with other members adds richness to all of OLLI's activities. Consider OLLI your invitation to connect with other lifelong learners — an embedded benefit of membership!

OLLI Shared Interest Groups (SIGs)

Shared Interest Groups (SIG) bring together (online for now!) people with a common interest for monthly meetings or activities designed by group members. There is an emphasis on community and friendship as well as enhancing skills, education, or experiences.

OLLI Out of Town In-Person and Virtual Travel

OLLI members can look forward to both in-person and virtual educational travel experiences around Detroit, southeast Michigan, and, occasionally, even further afield.

DEI Committee

The mission of the DEI committee is to diversify the OLLI membership, create a welcoming environment for all, increase awareness of socioeconomic disparities and promote social justice.

WANT TO LEARN MORE?
(734) 998-9351 or www.oli-umich.org
Check us out on Facebook:
OsherLifelongLearningInstituteAtUMich

Event Registration Procedure

STUDY GROUPS AND SIGS ARE SUBJECT TO LOTTERY THIS TERM

OLLI has created a more equitable registration process that also addresses operational problems on the first day of registration. The process applies only to Study Groups and Shared Interest Groups (SIG) this term. Registration for all other OLLI offerings are not subject to lottery.

HERE IS WHAT YOU NEED TO KNOW FOR STUDY GROUPS AND SHARED INTEREST GROUPS (SIGS) REGISTRATION:

- ◆ The initial registration period will run from **January 2 at 10:00am to January 16 at 4:00pm**. You can register at any time during this period and receive equal consideration for classes that become oversubscribed.
- ◆ All oversubscribed study groups and Shared Interest Groups (SIGs) will be subject to a lottery to give everyone an equal chance to get in. Early registration does not increase your chances.
- ◆ Everyone who applies for programs that become subject to the lottery will be notified of the outcome by **5:00pm on January 18**.
- ◆ Members who are not selected will be given refunds, placed on a wait list, and invited to join if space becomes available. Our goal is to issue refunds the week after the lottery.
- ◆ Registration for classes that are not full will still be possible after **January 18**.
- ◆ As before, you can register online or by mail. **The preferred method for registration is online.**

KEY DATES

Registration begins:

January 2, 2024 10:00am

Initial registration ends:

January 16, 2024, 4:00pm

Notices sent:

January 18, 2024, by 5:00pm

Classes begin January 29, 2024

Questions about registration?

Please contact the OLLI office via e-mail at olli.info@umich.edu or by phone at (734) 998-9351.

Scholarship Opportunities

Membership and programming scholarships are available to anyone (50+) interested in lifelong learning regardless of resources. This allows access to our programming* without barriers. OLLI has updated our scholarship opportunities, making the process self-selecting. No longer will you be required to request assistance through contacting the OLLI office. Simply follow the instructions on the website during the payment process or mail in the completed application and registration forms to our office.

Scholarships are utilized on the honor system.

**Excludes OLLI Out of Town in-person trips*

New Membership Options

For this year, we are offering three levels of membership. You can decide for yourself the option that best suits your resources, interest, and convenience.

BASIC MEMBERSHIP

Our Basic Membership price will be \$35 for the year. The Basic Membership will work like the OLLI membership in past years—i.e., you choose which lectures, study groups, shared interest groups and other events you want. Pay for each of them when you register, at the price listed for them in the catalog and on the website.

ENHANCED MEMBERSHIP

As an alternative to the Basic Membership, you can opt to purchase an Enhanced Membership, at a price of \$100 for the year. You will still choose which lectures, study groups, shared interest groups, etc., you want, and register for them. However, unlike the Basic Membership, you will receive a discount of \$5 for each lecture, study group, shared interest group or other event from the price listed in the catalog. The discount will be applied automatically when you register on the website.

This level of membership will be attractive to anyone who signs up for 13 or more different events during the year.

The total lecture discount cannot exceed \$50, and only one discount of \$5 is applied to any lecture package (since the packages are already discounted).

ALL-INCLUSIVE MEMBERSHIP

The All-Inclusive Membership is the third option, at a price of \$300 for the year. This option includes access to all lectures, study groups, shared interest groups and other events OLLI offers.

Here are the rules for the All-Inclusive Membership:

- ◆ You must register for each event you'd like to attend.
- ◆ You need to pay the full price of any out-of-town trips.
- ◆ If a study group or shared interest group charges any extra fees (for example, for a book), you will have to pay the extra fee.
- ◆ The All-Inclusive Members do not have any priority for participation in study groups, shared interest groups or other events (i.e., they must be open and available for new members at the time you register for them).

Note, since these membership options are new, OLLI reserves the right to modify the options or rules relating to them at any time, without notice.

Other Changes for this Year

Try Out OLLI—Non-Member Pricing

Know someone who might be interested in OLLI but is hesitant about becoming a member. This year, we will allow non-members to attend a lecture at a price of \$20. This will be limited to two lectures per year per person.

Only members may join study groups or shared interest groups.

Scholarship Assistance

To ensure that everyone will be able to afford our programming, OLLI is instituting a program of scholarship assistance that is self-selecting. No longer will you be required to request assistance through the office. Simply follow the instructions on the website during the payment process.

This program is on the honor system. We ask that you only take advantage of it to the extent you need it. If you can pay part of the cost of a program or membership, we ask that you do so.

And because this is a relatively new system, and we need to ensure that we have adequate finances to continue our programming, we have established limits on how much aid can be requested both on a per person and aggregate basis.

For further information on these options, please contact the OLLI office at 734-998-9351, or email us at olli.info@umich.edu. We're here to help make your OLLI experience as easy and pleasurable as possible!

“

After retiring from an intensive career, OLLI gave me intellectual stimulation that I missed from working and I met some interesting people.”

— Gerry Lapidus ,
OLLI Volunteer

TABLE OF CONTENTS

Welcome Letter	1	Table of Contents	6-11
Your Guide to OLLI-UM	2	OLLI at U-M & OLLI Staff	12
Event Request/Registration Procedure	3	OLLI's Winter Open House	13
New Membership Options	4	Diversity, Equity, and Inclusion @ OLLI	14-15
Other New Changes	5		

OLLI DEI PRESENTS: ZEKELMAN HOLOCAUST CENTER'S SPECIAL LECTURE SERIES	PAGE
The Holocaust in the Context of World War II	16
Escaping Genocide: Jewish Refugees and Immigration During the Holocaust	17
Women's Experiences During the Holocaust	17
Policing and the Holocaust	17
Returning to Life After the Holocaust	18
Anti Semitism Since the Holocaust	18
Virtual Art Tours	19

ALFRED GOURDJI DISTINGUISHED LECTURE SERIES	PAGE
Contested Terrain of Critical Race Theory	20
An Evening with Professor Robert Putnam, and the Documentary Film About His Work	21
The Upswing: How America Came Together a Century Ago and How We Can Do it Again	22
TBA	22
The Other Gases: The Politics of Short-Lived Climate Pollutants	22
TBA	23

THURSDAY LECTURE SERIES	PAGE
Robotics in Medicine	25
The Genome Engineering and Therapeutic Revolution	25
The Hubble and Webb Space Telescopes: A New Era of Discovery	26
AI Enhanced Drug Discovery and Repurposing – From Benchside to Bedside	26
Shaking Things Up: About Natural and Anthropogenic Earthquakes and Noise	27
Managing the Transition to EVs: Tales of Countries, Companies, and Engineers Trying to Create the Future	27
The Arts As Catalysts of Social Change	28
Big Data and Artificial Intelligence	28
Summer Lecture Series: Nature and the Garden	29

OLLI OUT OF TOWN	PAGE
A Visit to the Wharton Performing Arts Center on the Michigan State Campus for a matinee performance of <i>Moulin Rouge, The Musical!</i>	30
A Visit to Zekelman Holocaust Center located in Farmington Hills, MI	31
A Visit to the Dow Gardens in Midland	32
Victoria and Albert – Love, Loss and Kensington	33
To Die Upon a Kiss: A Tour of Selected Works at the Detroit Institute of Arts	34
Art Across Cultures: Tour the Smithsonian National Museum of Asian Art	34

OLLI Out of Town International Trip – Shades of Ireland	41
--	-----------

EVENINGS WITH OLLI	PAGE
Blast Off to Ann Arbor’s 2024 Bicentennial	36
What’s Happening at Bridge Magazine?	37
Embracing Our Differences: The Transformative Power of Art to Change Hearts and Minds	37

OLLI SHARED INTEREST GROUPS (SIGS)	PAGE
NEW! A Group for Novel Writers led by Chris Siehl	39
Current Events led by Paul Wegner	39
The Future of Healthcare in the U.S. led by Bruce Friedman	39
The Schmoozery: At Our Age, In This Age led by Hank Greenspan	40
A Study of Ethics led by Stu Simon	40
Artificial Intelligence 360 led by Deb Mukherjee	40

OLLI READS	PAGE
OLLI Reads Presents: <i>Celebrate Every Day</i> from the Bakers at Zingerman's Bakehouse	41

TABLE OF CONTENTS – STUDY GROUPS

S = Single

ART & ARCHITECTURE	PAGE
Art and Identity: Ukraine's History through Artistic Eyes	43
Opposite Ends of the Style Spectrum: Architects and their Ann Arbor Area Works (S)	43
Art History—Paleolithic through New Kingdom Egypt	44
Gallery Walks: Gauguin & Van Gogh Peregrinations of Two Pariahs	44
Monday Painters	44

CURRENT EVENTS, LAW, POLICY, & POLITICS	PAGE
<i>American Carnage: Shattering the Myths That Fuel Gun Violence</i>	45
AI: Is It a New Frontier for Linguistic Justice?	45
Bridging Divisions: Complexity, Curiosity and Compassion	46
<i>Prisoners of Geography</i>	46
Truth In Politics	46

S = Single

FOREIGN LANGUAGE	PAGE
Chinese 2	47
Chinese 7	47

HISTORY AND CULTURE	PAGE
Racism in America - The History We Didn't Learn in School	48
Magic and Medicine: A Brief History (S)	48
Insights from a Life Among Holocaust Survivors	49
Healthy Chinese Cooking 1 (S)	49
Healthy Chinese Cooking 2 (S)	49
Only Hope: My Mother and the Holocaust Brought to Light (S)	49
Cooking Capitalism: Advertising Ephemera from the Janice Bluestein Longone Culinary Archive (S)	50
The Heartbeat of History (S)	50
Ann Arbor's Bicentennial – in Black (S)	50
Black Folks: The Making of the Black Working Class	51
The Bentley Historical Library: Where Michigan's History Lives (S)	51
Jewish Humor (March Session)	52
Jewish Humor (May Session)	52

HOBBIES, GAMES, & SPORTS	PAGE
The Bee Lady Talks (S)	42
Pewter Casting Workshop (S)	53

INVESTING, ECONOMICS, AND FINANCE	PAGE
In-Depth Investment Skills: How to Become a Savvy Investor	53

STUDY GROUPS (CONTINUED)

S = Single

LITERATURE, POETRY, & DRAMA	PAGE
T.S. Eliot's <i>Objective Correlatives</i>	54
Shakespeare: Man and Plays	54
Stratford Festival's Shakespeare Plays 2024	54
Shakespeare Contemporaries: Successors	55
The Stories of Anton Chekhov	55
What Sort of Elder Do You Wish to Be?	55
Shakespeare In a Comic Vein	56
Some Perspectives on Shakespeare's Macbeth	56

MUSIC, THEATER, & FILM	PAGE
Films Portraying Families in the US: What We Can Learn about Ourselves and Others	56
Modern Classics: Detective Mystery Fiction On Film	57

RELIGION, PHILOSOPHY, AND SPIRITUALITY/HISTORY AND CULTURE	PAGE
<i>Why Zebras Don't Get Ulcers</i>	57

STEM (SCIENCE, TECHNOLOGY, ENGINEERING, AND MATH)	PAGE
Gene Editing and Our Food	58
Keeping Safe with Online Transactions (S)	58
Overview of String Theory	58
The Evolving Universe: Physics, Complexity, and Selection	59

S = Single

SOCIAL SCIENCE	PAGE
The Art and Practice of Mindful Self-Compassion	59
Lessons in Diversity from a Prison Classroom (S)	60
<i>How to Know a Person</i>	60
The Complexity of Free Speech (S)	60
Cognitive Biases: We All Have Them and How to Reduce Their Impact on our Decisions (S)	61
A “City’s Conscience”: The Life and Career of Josephine Gomon (S)	61

WRITING	PAGE
Writing Our Stories	61
Writers Unlimited	61

SPECIAL STUDY GROUPS	PAGE
Spreading the Word: Revisiting Dr. Johnetta Brazzell and the Pontiac Oral History Archive (S)	62
<i>The Address Book: What Street Addresses Reveal about Identity, Race, Wealth, and Power</i> by Deirdre Mask (S)	62
Women Rapping Revolution (S)	63
When Climate Change and Environmental Racism Converge: Who Will be Left Behind? (S)	63
The War for Hearts and Minds: Populism’s Battle with the Media (S)	64

INDEXES AND MORE

Study Groups Meeting Locations	65	Notes	74-76
Get Involved With OLLI	66	Volunteer Recognition List	77
Make a Gift to OLLI-UM	67	Big Hearts for Seniors	78
Index: Study Groups by Alphabetical Order	68-69	The Community Programs of the Geriatric Center	79
Index: Study Groups by Day of the Week	70-71	Dr. Martin Luther King, Jr. Day Celebration	80
Index: Study Groups by Start Date	72-73		

OLLI at U-M

Who We Are

OLLI is a volunteer centered organization that offers programs for lifelong learners. It capitalizes on the skills, knowledge, and experience of our volunteers who plan and implement the learning programs for their peers.

Our Mission

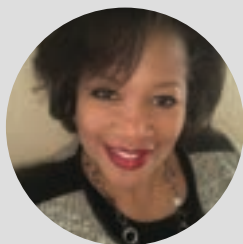
To enhance quality of life by providing stimulating, meaningful, and high-quality lecture series, classes, travel and social events for an increasingly diverse group of persons 50 and older.

The OLLI Way

As members of OLLI-UM, we value free expression of ideas. In doing so, we agree to abide by these guidelines:

- ◆ I will be respectful of another's point of view.
- ◆ I will demonstrate through words and actions that each colleague is a person of value to be respected.
- ◆ I will be accountable for my words and actions.
- ◆ I will be an ally, I will respond, and I will act with and for others in pursuit of an organization where inclusion is valued.

OLLI Staff



ANGELA BINGHAM
OLLI Director
anabi@umich.edu



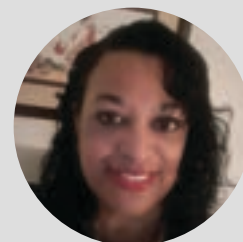
RYAN LUTTERMOSER
OLLI Assistant Director
lutterrj@umich.edu



WENDY ASCIONE-JUSKA
Community Outreach Coordinator
wascione@umich.edu



KENNEDY PARKER
Administrative Assistant
parkenne@umich.edu



GAYLE JACKSON
Administrative Assistant
gjackson@umich.edu



M UNIVERSITY OF MICHIGAN

OLLI'S

Winter

OPEN HOUSE

FRIDAY, JANUARY 5, 2024 | 9:30 - 12:00 PM

MORRIS LAWRENCE BUILDING, WASHTENAW COMMUNITY COLLEGE

Please join us for our in-person Winter Open House. We are planning an engaging and exciting event for our new and returning members and guests. This is a wonderful opportunity to socialize with your friends.



DIVERSITY, EQUITY, AND INCLUSION

In 2019, OLLI-UM adopted a strategic plan that mandated the creation of our own Diversity, Equity, and Inclusion (DEI) Committee in order to ensure that DEI values would be infused throughout our program at every level.

The committee drafted a mission statement which is detailed below. Our goal was to lay out a road map for the program and ourselves, so that we would be accountable in realizing our objectives.

DEI MISSION STATEMENT

The mission of the DEI Committee is to increase the diversity of OLLI membership and create an environment that welcomes all; increase awareness of racial, social, economic, educational and health disparities experienced by marginalized communities; encourage members' self-education and self-reflection on issues related to implicit bias; and promote positive, transformational change leading to the eradication of racial and social injustice in ourselves, the OLLI membership, and the community-at-large.

We will do this through:

- ◆ Spearheading efforts that lead to continuing awareness and education of our members on issues related to racial and social inequities through lectures, workshops, book discussions, and study groups, and encouraging members to initiate their own self-education on these issues.
- ◆ Working closely with other OLLI committees to ensure DEI principles are infused and integrated throughout the organization.
- ◆ Working as a bloc or as individuals to help influence formal and informal policies that can be implemented to effect positive change.
- ◆ Partnering with other organizations and committees with similar aims internal and external to U-M to collaborate on relevant programming and initiatives.
- ◆ Evaluating strategies wherever possible in order to identify positive and negative outcomes such that initiatives can either be continued or improved upon.

OLLI-UM is a community program of the Geriatrics Center.



The DEI Committee has now started to identify additional partners with similar aims to determine shared interests, and together plan activities, programming and educational opportunities to expand our collective reach.

As you can see, OLLI has set in motion a thoughtful and determined process for fulfilling our DEI mission and values as outlined in our strategic plan – **but we are just getting started!**

With the DEI Committee's leadership, OLLI and our programs will become richer and deeper, including understanding America's past and current history in racism, exploring strategies for its eradication, and learning about the significant contributions which marginalized groups have made to America's greatness. Please join us so that all voices can be heard and represented in our community and beyond.

The OLLI DEI Committee is always looking for new members; won't you consider joining us?

“

OLLI offers a wealth of opportunities for learning across many disciplines in a variety of formats, from study groups to lectures to field trips. Leaders and teachers are generally experts in their fields, offering a wide array of different educational experiences. For me personally, a retired university professor, it's a chance to continue teaching on topics related to language meaning and use in relation to contemporary issues, and it's a wonderful, rich, fun experience.”

— Alice Horning, OLLI Volunteer

OLLI DEI PRESENTS

ZEKELMAN HOLOCAUST CENTER'S SPECIAL LECTURE SERIES

This series will be offered through The Zekelman Holocaust Center located in Farmington Hills, MI and facilitated by their professional Education Department staff. The mission of The Zekelman Holocaust Center has remained the same for nearly 40 years: engage, educate, and empower people of all backgrounds through teaching about the murder of millions during the Holocaust and why each of us must respect and stand up for the rights of others if we are to prevent future genocide and hate crimes. Participants can expect to learn about the Holocaust through thematic and chronological sessions that highlight the importance of individual choice, during the past and present, and the experiences of the Jewish people during the Holocaust.

- **Day pass: \$12.00**
- **Full Yearlong Series: \$60.00**
- **2nd Thursday of the month**
- **2:00 - 3:30pm**
- **September 2023- June 2024**

Online Only:  zoom

The Holocaust in the Context of World War II

Thursday, January 11th, 2024

2:00 - 3:30pm

\$12 | Online Only

World War II shaped the Holocaust during its most lethal years. This presentation focuses on how the war impacted the pace, intensity and reach of the Holocaust, following the frontlines of the war in Europe. Drawing from survivor stories and artifacts, participants will explore the role of military personnel as both perpetrators and rescuers and the impact of their choices. Highlighting testimonies from Jewish military veterans of WWII shows another dimension of armed resistance to Nazi oppression.



Escaping Genocide: Jewish Refugees and Immigration During the Holocaust



Thursday, February 8th, 2024

2:00 - 3:30pm

\$12 | Online Only

During the Holocaust, thousands of Jewish refugees attempted to flee from Nazi-occupied Europe and find freedom and safety across

borders. Their journeys were often made extremely difficult by political and practical obstacles. Learn more about the Holocaust survivors who immigrated to Michigan to build their lives after the war and about the upstanders who helped refugees escape.

Women's Experiences During the Holocaust

Thursday, March 14th, 2024

2:00 - 3:30pm

\$12 | Online Only

The Holocaust was not gender neutral. Women experienced the Holocaust as women and were targeted differently as women. This presentation explores women's experiences under Nazi control, focusing on

Jewish victims and survivors of the Holocaust as well as women who risked their lives to resist hatred and help others during one of the darkest times in human history. Centering the experiences of women provides a more nuanced understanding of the Holocaust and its impact.



Policing and the Holocaust



Thursday, April 11th, 2024

2:00 - 3:30pm

\$12 | Online Only

During the Holocaust, police forces in Germany and occupied countries were often ordered to conduct round-ups and violence against the Jewish community. Many obeyed the orders, but some

heroically chose to defy them. This session focuses on the choices made by people in uniform to either commit or resist hate-based violence during the Holocaust, examining the factors that led some people to stray from their mission to protect and serve.

Returning to Life After the Holocaust



Thursday, May 9th, 2024

2:00 - 3:30pm

\$12 | Online Only

The holocaust was a catastrophic event. After this unthinkable horror, life did not immediately go back to normal. This presentation will address an overview of the Holocaust, while also

talking about what happened after liberation and the lives that survivors went on to build. Using artifacts and testimony from survivors in our community here in Michigan, we will discuss the ongoing process of returning to life after the Holocaust and the importance from their personal stories.

Anti Semitism Since the Holocaust

Thursday, June 20th, 2024

2:00 - 3:30pm

\$12 | Online Only

Antisemitism did not begin or end with the Holocaust and it continues to persist today. This program addresses how to recognize antisemitism and how to stand up to it in our communities. This presentation

will analyze contemporary manifestations of antisemitism and the scope and scale of antisemitism. This presentation will identify actions we can take in our own lives to recognize and actively respond to antisemitism and other forms of hate.



DEI COLLABORATIONS:

**The Alfred Gourdji Distinguished Lectures February Lecture on CRT (Critical Race Theory)
Out of Town day trip to the Zekelman Holocaust Center
Embracing our Differences for April 17 2023 (Evenings with OLLI and DEI Collaboration)**

ART TOUR

VIRTUAL TRIP TO THE
MUSEUM OF MODERN ART IN NEW YORK

EXPLORE WORKS BY
VAN GOGH, WARHOL, & MORE!
TUESDAY, JANUARY 16 @ 10:00AM



ART TOUR

VIRTUAL TRIP TO THE METROPOLITAN
MUSEUM OF ART IN NEW YORK

EXPLORE WORKS BY
RENOIR, MICHELANGELO, & MORE!
TUESDAY, JANUARY 23 @ 10:00AM



ART TOUR

VIRTUAL TRIP TO THE
ART INSTITUTE OF CHICAGO

EXPLORE ICONIC AMERICAN ARTWORKS
TUESDAY, JANUARY 30 @ 10:00AM



ART TOUR

PARISIAN ART OF THE BELLE ÉPOQUE

EXPLORE IMPRESSIONIST ART,
THE EIFFEL TOWER, & MORE!
TUESDAY, FEBRUARY 6 @ 10:00AM



About Your Tour Guide

Julie Averbach recently graduated from Yale University with a double major in History of Art and Psychology. Julie leads smARTEE, a virtual arts enrichment program expanding museum access amid the COVID-19 pandemic.

Website: www.smartee.biz

REGISTER ON THE OLLI WEBSITE: WWW.OLLI-UMICH.ORG

Alfred Gourdji DISTINGUISHED LECTURE SERIES

The Alfred Gourdji Distinguished Lecture Series was planned by Bernard Banet, Ron Bogdasarian, Ron Frisch, Beverley Geltner, John Kelly, Leo Shedden, Marie Vitale, and Katherine Woo, and co-chairs Gerald Gardner and Frances Schultz

OLLI's Distinguished Lecture Series has been renamed as the Alfred Gourdji Distinguished Lectures Series in memory of our friend and colleague who was the heart and soul of the series for many years. The Series features prominent, engaging speakers from "town and gown." It consists of ten lectures, five in the fall session and five in the winter/ spring session. Learn from well-known experts about an array of fascinating topics. Each lecture is just the beginning; a stimulating Q&A period follows each session.

- **2nd Tuesday of every month**
- **10:00 - 11:30 am**
- **\$12/day pass**
- **\$50 for 5 lectures Feb. - June.**
- **Special Film Event on 3/11: \$12 extra**

Programs take place in-person at:

Washtenaw Community College
Morris Lawrence Building
Towsley Auditorium
4800 E Huron River Dr.
Ann Arbor, MI 48105

Programs will also be available live through:

Contested Terrain of Critical Race Theory

Tuesday, February, 13 10:00 - 11:30 am

Professor Ronald C. Woods

The presentation will situate this hotly debated, often mischaracterized subject, into a broader stream of cultural and political discourse involving race in America.

Professor Woods formerly served as the first head of the department of African American studies at EMU and, until recently, interim department head. He has also served as the Michael O. Sawyer visiting professor of constitutional law and politics at the Maxwell School of Citizenship and Public Affairs, Syracuse University and as a legal services attorney in Cincinnati, Ohio. Professor Woods previously was an interim president of the Michigan Council of Black Studies and has been a consultant to school systems on various aspects of desegregation and diversity enhancement. He is on the board of directors of the African American Culture and Historical Museum of Washtenaw County, and is a consultant to the Charles H. Wright Museum of African American History in Detroit. From 2002–2004, Professor Woods was the director of the Eastern Michigan Institute for the Study of Children, Families and Communities. A member of the board of directors of Wittenberg University, he has lectured internationally and has published articles on refugee policy in the horn of Africa and on African American vernacular English.



Jointly planned with OLLI-UM's DEI Committee

Special Film Event: An Evening with Professor Robert Putnam, and the Documentary Film About His Work

Monday, March 11, 2024, 5:00 - 8:00 pm

Cost: \$12 extra | In-person only

Prof. Robert D. Putnam

Harvard University

Professor Robert D. Putnam

will host a showing of the documentary about his research, “Join or Die,” and answer questions afterward. Putnam is Professor of Public Policy at Harvard University. A member of the National Academy of Sciences and the British Academy, he received the Skytte Prize, the world’s highest accolade for a political scientist, and the National Humanities Medal, America’s highest honor in the humanities. He has written fifteen books, translated into twenty languages, including *Making Democracy Work* and *Bowling Alone*, both among the most cited (and bestselling) social science works in recent decades. He has been consulted by five US Presidents and half a dozen other world leaders, including Pope Francis.

The film, “Join or Die”: In this feature documentary, follow the half-century story of America’s civic unraveling through the journey of legendary social scientist Robert Putnam, whose groundbreaking “Bowling Alone” research into America’s decades-long decline in community connections could hold the answers to our democracy’s present crisis. Flanked by influential fans and scholars — from Hillary Clinton, Pete Buttigieg, and Surgeon General Vivek Murthy to Eddie Glaude Jr., Raj Chetty, and Priya Parker — as well as inspiring groups building community in neighborhoods across the country, join Professor Putnam as he explores three urgent civic questions: What makes democracy work? Why is American democracy in crisis? And, most importantly... What can we do about it?



The Upswing: How America Came Together a Century Ago and How We Can Do it Again

Tuesday, March 12, 2024, 10:00 - 11:30 am

Prof. Robert D. Putnam

Harvard University

Deep inequality; unprecedented polarization; a fraying social fabric; extreme cultural narcissism—Americans today agree only that these are the worst of times. Similarly, during the Gilded Age 125 years ago, America was exceptionally individualistic, unequal, polarized, and self-centered. But then America turned a corner, becoming until the 1960s steadily more equal, cooperative, generous, and focused on our mutual obligations—a society on the upswing. What lessons can we learn from that period?

Robert D. Putnam is Professor of Public Policy at Harvard University. A member of the National Academy of Sciences and the British Academy, he received the Skytte Prize, the world’s highest accolade for a political scientist, and the National Humanities Medal, America’s highest honor in the humanities. He has written fifteen books, translated into twenty languages, including *Making Democracy Work* and *Bowling Alone*, both among the most cited (and bestselling) social science works in recent decades. He has been consulted by five US Presidents and half a dozen other world leaders, including Pope Francis.



Diet, Exercise and Brain Health: Latest Research Findings

Tuesday, April 9, 2024, 10:00 - 11:30 am

Prof. Eva L. Feldman

This talk will review scientific research findings on the effects of different diets on brain health and cognition. Second, the talk will address research findings on the effects of exercise, and how different types of exercise--including aerobic, high-intensity interval training, and resistance training--affect brain health and cognitive functioning.

Eva L. Feldman MD, PhD, is James W. Abers Distinguished University Professor, and the Russell N. DeJong Professor of Neurology at Michigan Medicine. She is a neurologist and neuroscientist who has devoted her career towards understanding the etiology of neurological disorders and developing new treatments. Dr. Feldman is Director of the University of Michigan ALS Center of Excellence, and the NeuroNetwork for Emerging Therapies. She is annually listed in Best Doctors in America, and a Past President of the Peripheral Nerve Society and the American Neurological Association (ANA). She is a member of the National Academy of Medicine Council, the Association of American Physicians, and a Fellow of the AAAS. Her work is internationally recognized, with more than 500 published articles, 70 book chapters, and greater than 55,000 citations.



The Other Gases: The Politics of Short-Lived Climate Pollutants

Tuesday, May 14, 2024, 10:00 - 11:30 am

Prof. Barry Rabe

Carbon dioxide dominates most discussions of climate change, a powerful greenhouse gas that remains potent in the atmosphere for long periods. However, its capacity for warming is compounded by a series of short-lived climate pollutants, such as methane, hydrofluorocarbons (HFCs), and black carbon. These contaminants do not last nearly as long in the atmosphere as carbon but have a far more intensive short-term impact. This presentation will examine the politics of reducing these gases, with a particular focus on methane and HFCs. It will examine major policy advances in the case of HFCs, including bipartisan legislation in the United States and a robust global regulatory system, in contrast with other short-lived climate pollutants.

Barry Rabe is the J. Ira and Nicki Harris Family Professor of Public Policy at the Gerald Ford School of Public Policy and the Arthur Thurnau Professor of Environmental Policy at the University of Michigan.

He is also a non-resident senior fellow at the Brookings Institution and is an elected fellow of the National Academy of Public Administration. Rabe is a political scientist who examines the political feasibility of adopting and implementing environmental, energy and climate policies in federal systems such as the United States and Canada. His most recent books examine the politics of putting a price on carbon emissions and the limitations of climate policy reliant on executive branch action rather than legislation.



Will Drinking Coffee Help You Live Longer?: Improving the Rigor of Science

Tuesday, June 11th, 2024, 10:00 - 11:30 am

Prof. Pamela Davis-Kean

Newspaper headlines are full of recommendations on nutrition, workouts, ways to increase productivity, and potential treatments for improving health outcomes. How rigorous is the science behind these headlines? In this talk, I will discuss the problems with science communication and how to be a critical reader of our daily headlines as well as the science behind them. I will highlight some of the problems with the poor incentives in generating research and what the scientific communities are doing to make sure that the science is rigorous and available to the broader community.

Dr. Davis-Kean is Chair of the Developmental Psychology Area of UM's Psychology Department. Her research focuses on the various pathways that the socio-economic status of parents relates to the cognitive/achievement outcomes of their children. She is the Founding Director of the Population, Neurodevelopment, and Genetics program at UM's Institute for Social Research. The program examines the complex transactions of the brain, biology, and behavior as children and families develop over time. Prof. Davis-Kean is interested in how both the micro (brain and biology) and macro (family and socioeconomic conditions) aspects of development relate to cognitive changes in children across the lifespan.





THURSDAY LECTURE SERIES: **BIG SCIENCE AND TECH EXPLAINED!**

Take an in-depth look at six different themed topics during OLLI's Thursday Lecture Series. Five of these series include six lectures with expert speakers who cover a wide range of aspects of the theme. The Summer Lecture Series has three lectures. Learning continues in an interactive Q&A period following each lecture.

- **10:00 - 11:30 am**
- **\$12/day pass**
- **\$60/ 6-week session**

Programs take place in-person at:

Washtenaw Community College
Morris Lawrence Building
Towsley Auditorium
4800 E Huron River Dr.
Ann Arbor, MI 48105

Programs will also be available live through: zoom

The views expressed are those of the speakers and do not necessarily reflect those of OLLI-UM or the University of Michigan.

Big Science and Tech Explained! January 11 – February 15, 2024

Since the turn of the 21st century, researchers at laboratories, universities, corporations, and agencies across the world have collaborated to advance mankind's scientific knowledge. In this series, experts in six fields will explain what is being done, what we have learned, and what looms in the future. We will explore robotics in medicine, electric vehicles, earthquake strategies, advances in drug development, CRISPR gene editing, and the James Webb and Hubble Space Telescopes.

COMMITTEE MEMBERS:

Dick Chase
Carol Levin
Mike Lott
Leo Shedden
Craig Stephan
Avi Eisbruch, Co-chair
Jim MacBain, Co-chair

Robotics in Medicine

January 11th, 2024, 10:00 – 11:30am

Mark Draelos

\$12 | Speaker will be presenting in-person

Modern robotics has transformed many fields and healthcare is no exception. In this lecture, I survey the leading applications of robotics in medicine, surgery, imaging, rehabilitation, and nursing with a focus on key innovations and patient outcomes. I conclude by discussing active research topics in medical robotics and the potential they hold for improving patient care in the future.

Mark Draelos, MD, PhD, is a surgically trained physician and engineer who develops novel applications of medical robotics and imaging to improve patient care. After finishing Duke University's Medical Scientist Training Program where he studied biomedical engineering under Prof. Joseph Izatt, Mark completed an internship in general surgery at Duke University Medical Center. Currently, he is an Assistant Professor of Robotics and Ophthalmology at the University of Michigan, where he directs the Image-Guided Medical Robotics Laboratory.



The Genome Engineering and Therapeutic Revolution

January 18th, 2024, 10:00 – 11:30am

Yan Zhang

\$12 | Speaker will be presenting in-person

This presentation includes an overview of the latest development in genetic engineering and human gene therapy. In particular, the CRISPR-Cas DNA scissor technology will be introduced followed by their real-world applications. Their enormous social impacts on research, agriculture, medicine and beyond, as well as ethical concerns, will also be discussed.

Dr. Zhang received her B.S. in Biological Sciences from Peking University, China, and her PhD in Biomolecular Chemistry from University of Wisconsin-Madison. After completing postdoctoral training at Northwestern University and the UMass Chan Medical School, Dr. Zhang started her own research group as an Assistant Professor at the University of Michigan Ann Arbor. Her lab studies the CRISPR-Cas anti-viral defense system in bacteria and develops CRISPR technologies to advance human genome engineering.



The Hubble and Webb Space Telescopes: A New Era of Discovery

January 25th, 2024, 10:00 – 11:30am

Jennifer Wiseman

\$12 | Speaker will be presenting via Zoom

The Hubble Space Telescope is at its peak of scientific discovery, even 33 years into its illustrious mission. Now the Hubble and new Webb Space Telescopes, with complementary capabilities, are exploring deeper into the universe and unveiling more details in every astronomical realm including our own solar system, exoplanets, stellar nebulae, black holes, dark matter, and galaxies. This talk will explore what Hubble and other telescopes are showing us about the beauty and activity of our amazing universe.

Dr. Jennifer Wiseman is a senior astrophysicist at the NASA Goddard Space Flight Center where she serves as the Senior Project Scientist for the Hubble Space Telescope. Previously, she headed Goddard's Laboratory for Exoplanets and Stellar Astrophysics. Jennifer has also served as a Congressional Science Fellow, a Councilor of the American Astronomical Society, and the Director of the AAAS Dialogue on Science, Ethics, and Religion (DoSER). She loves nature and night skies.



Artificial Intelligence Enhanced Drug Discovery and Repurposing – From Benchside to Bedside

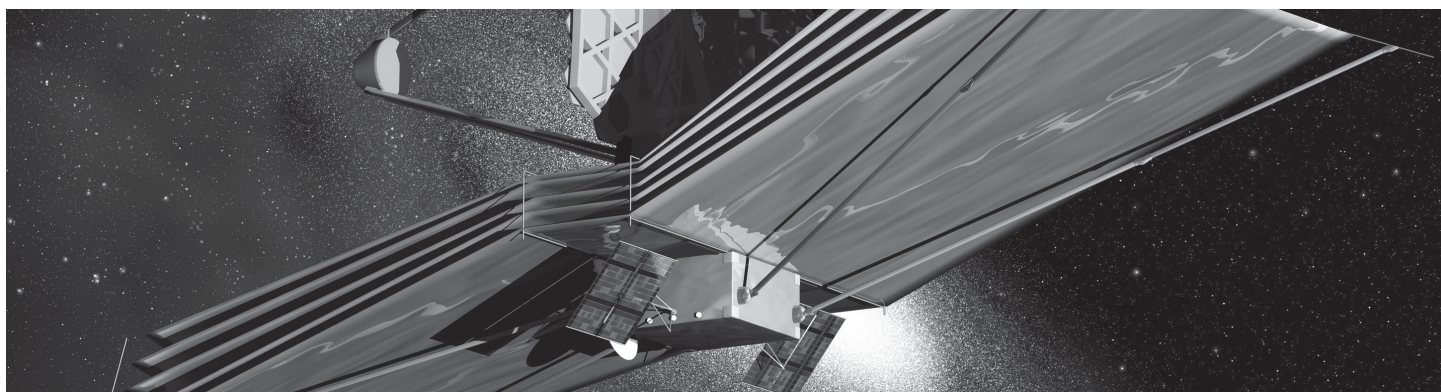
February 1, 2024, 10:00 – 11:30am

Jonny Sexton

\$12 | Speaker will be presenting in-person

The process of bringing a new drug to market has a high failure rate, a timeline of 10-15 years, and a cost of more than \$1 billion. Artificial intelligence coupled with the use of patient-derived cells and tissues can be leveraged to perform personalized drug screening and enhance the success of drug discovery, especially for rare diseases.

Jonny Sexton, PhD, earned his undergraduate degree in chemistry at UC Santa Barbara and his PhD in chemistry at UC Santa Barbara. He then did a postdoctoral fellowship at Stanford University with Nobel Laureate Roger Kornberg. In 2007, he took a faculty position at the University of North Carolina. Following that he was the director of Drug Discovery at the BRITE Institute. In 2018, he moved to the University of Michigan where he started a laboratory focusing on artificial intelligence enhanced drug discovery, particularly for chronic liver diseases. Currently he is the faculty director of the UM Center for Drug Repurposing.





Shaking Things Up: About Natural and Anthropogenic Earthquakes and Noise

February 8, 2024, 10:00 – 11:30am

Ben van der Pluijm

\$12 | Speaker will be presenting in-person

Earthquake prediction? Yes and No. We discuss what earthquakes are, where they occur, and why. We explore earthquake forecasting and the value of modern shake alerts. We also look at human-induced ('Anthropogenic') earthquakes, primarily from explosions, fracking and waste fluid injection, and the surprising record of societal vibrations ('noise') from day-to-day human activity.

Ben van der Pluijm has been Professor in the Dept of Earth & Environmental Sciences at the University of Michigan since 1985. His research areas are Structure and Tectonics, dealing with the geologic evolution of Earth's crust, from minerals to mountains, and Hazards Geology and Societal Resilience, dealing with the challenges of planet-human interactions. He teaches and lectures about geology and resilience. His research has taken him around the world.



Managing the Transition to EVs: Tales of Countries, Companies, and Engineers Trying to Create the Future

February 15, 2024, 10:00 – 11:30am

Bruce Belzowski

\$12 | Speaker will be presenting in-person

The global automotive industry is in the process of dramatically changing how they develop, manufacture, and sell their products. It's not a small task to change what you've been doing for 100 years, and this talk will take you on a journey from where we are to where we think we want to be. It won't be easy, and in the end, it won't be pretty, but we are going to do it anyway, hopefully, for the good of the planet.

Bruce M. Belzowski is the Managing Director of the Automotive Futures group. He received his B.A. and M.A. from the University of California, Berkeley, and the University of Michigan, respectively. His 25 years studying the global automotive industry at the University of Michigan Transportation Research Institute focused on a variety of automotive topics. His current research topics at Automotive Futures includes information technology, autonomous vehicles, powertrain strategies, and globalization of the automotive industry. These topics are addressed in Automotive Futures' five annual conferences that have been held over the past twelve years at the University of Michigan.



REMAINING THURSDAY LECTURE SERIES FOR 2024:

The Arts As Catalysts of Social Change

2/22/24-4/6/24

Traditionally, the arts have raised awareness and reflect the world in which we live. They explore injustices; influence reform of our political, economic, and social systems; and promote intellectual and moral development. This series will examine the role and impact of a range of art forms (the visual arts, dance, music, theater, and public art) on social change and social justice movements in the United States throughout the 20th and 21st centuries. Speakers will explore the power of art to both reflect current societal challenges, inequalities, and disparities; and provoke awareness that may change hearts and minds.

SPONSORSHIP

The first lecture in this series is sponsored by Karen Bantel and Steve Geiringer.

“OLLI has had a very meaningful and positive impact on our lives over the years. The excellent educational opportunities and the engaging people we have met have enriched our lives immeasurably.”

SPONSORSHIP

The final lecture in this series is sponsored by the Alumni Association of the University of Michigan.

“The Alumni Association of the University of Michigan is proud to sponsor this program and support the ongoing education of Michigan alumni.”

For further information, please visit:
alumni.umich/education-gateway/



Artificial Intelligence (AI) (Did “ChatGPT” write the following paragraph?)

4/11/24-5/16/24

Artificial Intelligence (AI) uses high-power computers and inputs of large data masses (“Big Data”) in a complex, self-learning process. For most of us, our initial direct experience with AI is the use of generative applications such as ChatGPT, Bing, and others—that can answer research questions, write newspaper articles, retouch photos, and even write poetry. However, AI applications extend well beyond text and image generation to include medicine, autonomous vehicles, facial identification, and workforce efficiency.

This lecture series will explore the nature of AI, and the current and future developments and impacts of AI. Speakers will cover ethics and public policy issues involved in maximizing the benefits of this new technology while avoiding its potential danger and harm.

SPONSORSHIP

The first lecture in this series is sponsored by the Alumni Association of the University of Michigan.

“The Alumni Association of the University of Michigan is proud to sponsor this program and support the ongoing education of Michigan alumni.”

For further information, please visit:
alumni.umich/education-gateway/

Summer Lecture Series: Nature and the Garden

6/6/24-6/20/24

Natural environments and created gardens give pleasure and respite to people everywhere and contribute to health and wellbeing. As natural landscapes shrink and change due to development, climate change and other forces there are opportunities to introduce some principles of natural habitats into our gardens to help preserve biodiversity, restore natural landscapes and reduce pollution in our waterways. This series will consider the benefits of rain gardens, the impact of native, non-native and invasive plants, the importance of supporting bees, butterflies, birds and other pollinators, and the health and emotional benefits of gardens and gardening.



“

OLLI has been a big part of my life for the past 7 years. I first started attending classes that stimulated my curiosity and expanded my views on subjects new to me. Facilitating classes is also great fun, which led to volunteering with this fine organization. A great way to broaden my retirement.”

— Bernie Beach, OLLI Volunteer

OLLI OUT OF TOWN

IN-PERSON TRAVEL:

Spend an educational day or more with OLLI-UM friends at noted sites around southeast Michigan and even further afield as we include an international travel opportunity. Trips vary in cost and length of time. *[Please Note: No refunds within 30 days of trip departure.]*

A Visit to the Wharton Performing Arts Center on the Michigan State Campus for a matinee performance of Moulin Rouge!, The Musical.

Sunday, April 7, 2024

8:45 a.m. Boarding begins

9:15 a.m. Bus departs Meijer Lot

**5:15 p.m. Return to Meijer Lot
(time approximate)**

Cost: \$189 – includes prescreening of the film for one week in advance of program.

Location: Meet at Meijer Parking Lot, 3825 Carpenter Rd., Ypsilanti

[Please note: Payment due in full upon registration; but no later than January 5, 2024. No refunds within 60 days of trip departure (i.e., show tickets are non-refundable) Price includes gratuity for driver and tour manager.]

Gather with OLLI friends for a fun-filled Sunday! Our first stop will be for brunch at the elegant Chemung Hills Golf Club & Banquet Center located in Howell. After our meal, we are off to the Wharton Center's Great Cobb Hall in Lansing where our group will enjoy zone 2 seating for the 1:00 pm matinee performance of Moulin Rouge.

Moulin Rouge! The Musical is the winner of 10 Tony Awards®, including Best Musical! Enter a world of splendor and romance, of eye-popping excess, of glitz, grandeur, and glory in gay Paree!



A world where Bohemians and aristocrats rub elbows and revel in electrifying enchantment. Baz Luhrmann's revolutionary film comes to life onstage, remixed in a new musical mash-up extravaganza. Directed by Tony Award® winner Alex Timbers, Moulin Rouge! The Musical is a theatrical celebration of Truth, Beauty, Freedom, and—above all—Love. With a book by Tony Award winner John Logan; music supervision, orchestrations, and arrangements by Tony Award winner Justin Levine; and choreography by Tony Award winner Sonya Tayeh; Moulin Rouge! is more than a musical—it is a state of mind.

Don't miss out on this theatrical celebration of life and love shared with your OLLI community on what we trust will be a wonderful Sunday!

A Visit to Zekelman Holocaust Center located in Farmington Hills, MI

In Collaboration with the OLLI-UM DEI Committee

Thursday, May 23, 2024

9:30 a.m. Boarding begins; 10:00 am Depart from Meijer Lot

4:00 p.m. Return to Meijer Lot

Cost \$90

Location: Meet at Meijer Parking Lot, 3825 Carpenter Rd., Ypsilanti

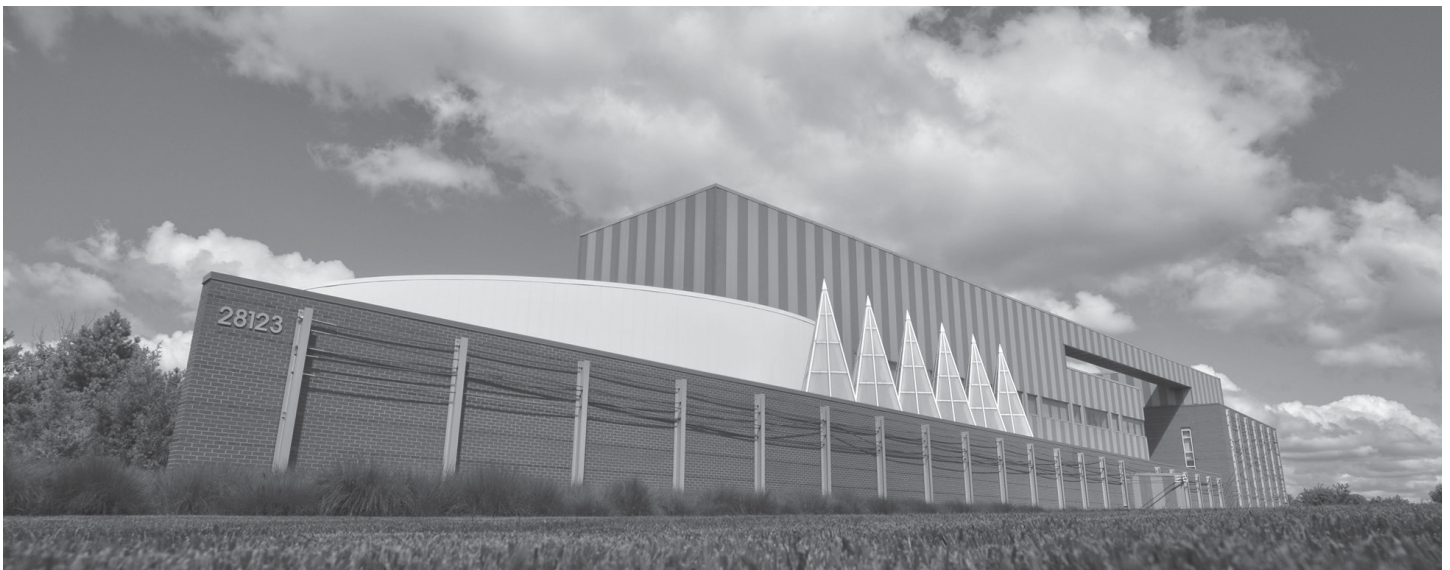
**THE Zekelman
HOLOCAUST
CENTER**

Join our OLLI group for a docent led tour of the Zekelman Holocaust Center (the HC) followed by a next generation Holocaust survivor presentation. This day trip is held in partnership with the OLLI DEI that has presented a special lecture series that began in September 2023.

Founded in 1984, the Zekelman Holocaust Center first opened its doors on the campus of the Jewish Community Center in West Bloomfield as the Holocaust Memorial Center and relocated to the current award-winning building in

2004. The HC houses not only core museum exhibits, but an extensive research library, archives, and a gallery for special art and history exhibits. Today, not only is there a rise in antisemitism, there is a decline in living testimony as the time approaches when Holocaust survivors will no longer be with us. The Holocaust Center's content focuses on Holocaust victims' and survivors' personal stories to help visitors understand how the Holocaust could have happened and to reflect on its impact for the past, present, and future generations.

Prior to our visit to the Zekelman Holocaust Center, lunch will take place at the Stage Deli in West Bloomfield. This celebrated family operated eatery has been in operation since 1962. While the Stage has changed its' location & menu over the years to stay ahead of history, one thing has always remained constant...the Goldbergs' dedication to the Stage mission. That mission, to serve only the finest traditional and modern Jewish Deli hand-crafted on site, served with abundance, respect and style remains its' guiding light.



A Visit to the Dow Gardens in Midland

Wednesday, June 5, 2024

6:30 a.m. Boarding Begins/ 7:00 a.m. Bus Departs

5:30 p.m. Return to Meijer Lot (approximate)

Cost: \$140

Location: Meijer Parking Lot, 3825 Carpenter Rd., Ypsilanti

[Please Note: Payment due in full upon registration and registration due no later than May 1, 2024. No refunds within 30 days of trip departure.]

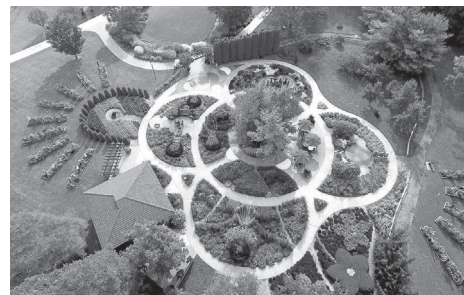
Take time to smell the flowers at this garden where nature and artistry combine. Bridges and footpaths lead through 110 acres of pine forest, flowerbeds, and delightful water features at this botanical garden.



In the morning, OLLI tour registrants are invited to explore the gardens led by an experienced guide; and in the afternoon visit the Alden B. Dow Home & Studio. Dow Gardens was established in 1899 as a private garden for the Dow family and now welcomes thousands of guests per year. Herbert Dow believed that the gardens are never a finished idea. This legacy continues each year through the use of unique plant varieties and innovative bed designs. On this guided tour, guests will experience

the horticultural beauty of Dow Gardens while learning the story of how this once private estate transitioned into a beloved botanical garden. By special arrangement, the Gardens will provide 'limited' golf cart transportation for individuals who need assistance. Our guided garden tour lasts approximately one hour and requires up to one mile of walking on hard-surfaced trails and pathways.

Designated a National Historic Landmark in 1989, the Alden B Dow Home and Studio continues to engage the imagination and elicits emotional responses in all who experience this powerful statement of Mid-Twentieth Century Modern architecture. Planted into an encompassing



pond, the Home and Studio is alive with reflective light, soaring roof lines, diverging angles, brilliant color and the perfect balance of enticement and tranquility. It truly is an "oasis of architecture and inspiration." It draws you into rooms of diverging angles, soaring roof lines, brilliant color, abundant natural light, and geometric patterns. The integration of building and site truly exemplifies Mr. Dow's definition of organic architecture as the idea that "...gardens never end and buildings never begin." The Home and Studio is 20,000 square feet, has many level changes and is not required to follow ADA guidelines. It is not wheelchair accessible.

Please plan to wear comfortable footwear as much of our day will be spent outside. Also enjoy a boxed lunch which is included and provided by the Grand Traverse Pie Company.

OLLI OUT OF TOWN

VIRTUAL TRAVEL:

Spend an educational hour online as you visit various geographic locations. The one-hour virtual tour program will be followed by a half-hour Q&A. This offer of programming is intended to encourage your interest in travel and venturing outside the local area. The package price will vary based on the number of programs selected.

The cost of one event is \$15, or \$40 for package of 3.

**OLLI Out of Town is offering virtual programming
in the afternoons from 3:00 – 4:30 p.m.**

Winter 2024:

**Tuesday, January 30th | Friday, February 9th
Friday, February 16th | Wednesday, March 20th**

Victoria and Albert – Love, Loss and Kensington

January 30, 2024 3:00 – 4:30 pm
\$15 | Online

Queen Victoria first met Prince Albert at Kensington Palace and her last major public appearance was to lay the foundation stone of the Kensington Museum re-named in their honor. Join London historian Ruth Polling, our Road Scholar presenter, as she explores Victoria and Albert's love story and how this royal power couple shaped cultural Kensington.

Our historian and Road Scholar will be joining us from her home in the United Kingdom. Ruth

Polling graduated top of her class as the London Blue Badge Travel Educator of the Year and has been sharing her knowledge of England with curious travelers for three years.

She holds a degree in International History with an emphasis in Military History from the London School of Economics. Ruth previously worked in London politics for eleven years including in the House of Commons and the House of Lords. London born and bred, she is energetic and passionate about her city and country.



NATIONAL PLAN FOR VACATION DAY

The last Tuesday in January is annually celebrated as National Plan for Vacation Day. In 2024, National Vacation Day falls on January 30th. OLLI Out of Town endeavors to recognize the day with the OLLI membership by encouraging travel and highlighting the importance of exploring a different cultural & geographic setting. Survey data has found that those who take time out to plan for and go on a vacation are overall healthier and happier.

To Die Upon a Kiss: A Tour of Selected Works at the Detroit Institute of Arts

Friday, February 9, 2024, 3:00 – 4:30 pm
\$15 | Online

The Detroit Institute of Arts (DIA) has one of the largest and most significant art collections in the United States with more than 65,000 artworks that date from the earliest civilizations to the present. Join us for a special 'Behind the Seen' tour of selected art in this prestigious collection. As February is the month in which we celebrate connections of the heart, we will explore specific works of art that look more closely on this theme. Scientists have proven that when experiencing "love," brain cells release dopamine, a natural stimulant, to many regions of the brain that affect human behavior. These areas of the brain are associated with wanting, motivation, focus, and craving. During this virtual tour that will be led by a trained DIA docent, we view a selection of works that explore the variety of behaviors associated with "love."

Art Across Cultures: Tour the Smithsonian National Museum of Asian Art

Friday, February 16, 2024, 3:00 – 4:30 pm
\$15 | Online

The creation of art is a universal human endeavor, but what connects artworks across cultures, and what sets them apart? Freer Gallery of Art founder Charles Lang Freer wrote, "For those who have the power to see beauty, all works of art go together." The Smithsonian's National Museum of Asian Art is home to more than 46,000 objects, with strengths in arts of the Islamic world; the ancient Near East; South, East, and Southeast Asia; and the United States. On this docent led museum highlights tour, our OLLI group will enjoy selections from diverse regions and time periods, exploring commonalities and differences in cultures, aesthetics, and ideas.

The Smithsonian Institution is the world's largest museum, education, and research complex, with twenty-one museums and the National Zoo—shaping the future by preserving heritage, discovering new knowledge, and sharing our resources with the world. The Institution was founded in 1846 with funds from the Englishman James Smithson (1765–1829) according to his wishes "under the name of the Smithsonian Institution, an establishment for the increase and diffusion of knowledge." As the first art museum of the Smithsonian, the Freer Gallery of Art, combined with the Arthur M. Sackler Gallery, has a hundred-year legacy of preserving, exhibiting, and interpreting exemplary works as the Smithsonian's National Museum of Asian Art.

Longwood Gardens: Exploring Architectural Grandeur & Horticultural Wonder

Wednesday, March 20, 2024, 3:00 – 4:30 pm
\$15 | Online

One of the world's great gardens, Longwood's story is one of legacy, innovation, and stewardship. When visiting Longwood Gardens, you are immersed not only in the breathtaking surroundings but in a rich history as well. The traditions and elegance of the gardens have evolved over decades to create the magnificence on display today. A living & expanding expression of its 1920's founder, Pierre S. du Pont; Longwood Gardens covers 200 plus acres located about an hour west of Philadelphia.

Join our OLLI group for a virtual stroll led by an expert staff member, James Sutton, Associate Director, Display Design at Longwood. Our discussion will be facilitated & hosted by Timothy Gould, Director of Continuing Education, Longwood Gardens. We will be guided through many of the highlights of Longwood spanning its intricate fountain systems to the meticulous gardens and conservatories. Enjoyed by one-and-a-half million visitors each year, awe-inspiring discoveries await us during our virtual visit at every turn.

OLLI at the University of Michigan *presents...*

Shades of Ireland

with Optional 3-Night Edinburgh Post Tour Extension

with Optional 3-Night London Pre Tour Extension

October 23 – November 1, 2024



OLLI Out of Town International Trip - Shades of Ireland -

OLLI Out of Town is partnering with Collette Travel and traveling to Ireland! This is a 10-day trip that will take place on October 23 - November 1, 2024. The deadline to register to guarantee availability is **April 24, 2024**.

For a brochure or to get more information,
contact olli.info@umich.edu or 734-998-9351.

EVENINGS WITH OLLI

Evenings with OLLI (EWO) offers fascinating Wednesday Evening Programs at the Kellogg Eye Center Auditorium, 1000 Wall St., Ann Arbor, MI 48105.

Attending Evenings with OLLI is a perfect way for pre-retirement friends or new folks to get to know OLLI, including meeting current OLLI members. As always, the first OLLI program is free to any non-member. These presentations are in-person only, with light refreshments available prior to each program.

Blast Off to Ann Arbor's 2024 Bicentennial

Wednesday February 21, 2024

Fee: \$12.00

Speakers: Amy Karbo, Norman Tyler,
Russ Collins, Andrew MacLaren
Kellogg Eye Center Auditorium
5:30–6:00 p.m. refreshments and networking
6:00–7:30 p.m. program

Lots of excitement is planned for Ann Arbor's bicentennial year 2024. Here's a special chance to learn about the many activities, events, and the legacy projects planned throughout the year, from members of the Bicentennial Coordinating Committee.

The program will include:



Amy Karbo, of Destination Ann Arbor, will provide an overview and serve as Emcee for the evening.



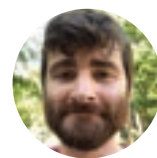
Norman Tyler, emeritus faculty of Urban and Regional Planning at Eastern Michigan University, will present info on self-guided Ann Arbor tours.



Russ Collins, of the Michigan Theater Foundation, will share a fascinating story of Ann Arbor's founding and Dexter's founding in 1824.



Andrew MacLaren, of the Ann Arbor District Library, will tell us about the bicentennial programs being offered at the AADL.



What's Happening at Bridge Magazine?

Wednesday March 20, 2023

Fee: \$12.00

Speaker: Amber DeLind

Kellogg Eye Center Auditorium

5:30–6:00 p.m. refreshments and networking

6:00–7:30 p.m. program and Q&A



Join Amber DeLind, Bridge Michigan membership and engagement director, for a presentation about Bridge

Michigan's past, present, and future. Bridge Michigan's mission is to make Michigan better through nonprofit, nonpartisan journalism and engagement opportunities. The organization has grown from a twice-weekly newsletter, with an editorial staff of two, to a daily publication with more than a dozen reporters and editors, and more than 25 employees.



Bridge Michigan currently employs the last three Michigan Press Association Journalists of the Year, and is the current Michigan Digital News Publication of the Year. Learn more about the publication, its trajectory, and aspirations for serving Michigan's news needs. Amber will offer observations about the state of regional journalism in Michigan, and will also overview some of the biggest investigative stories covered in Bridge.

Embracing Our Differences: The Transformative Power of Art to Change Hearts and Minds

Wednesday, April 17, 2024

Fee: \$12.00

Speakers: Nancy Margolis, Kay Wade,

Lynn Settles, Travis Erby

Kellogg Eye Center Auditorium

5:30–6:00 p.m. refreshments and networking

6:00–7:30 p.m. program and Q&A

Collaboration with OLLI-UM's DEI Committee

Hear about how this unique organization uses art to illustrate all types of diversity: race, sex, LGBTQ, mental and physical challenges, and sparks discussion on the ways that differences enhance our lives. The program works toward building an inclusive community. The art is from all over the world as well as from Ann Arbor and Ypsilanti.

Preview the artwork for the new Embracing Our Differences exhibit that will be displayed in the coming months in Ann Arbor's Gallup and Ypsilanti's Riverside Park, and learn about the artists, who they are, what inspired them, and how work was chosen. Of particular note will be how Embracing Our Differences has developed curricula available at no cost to Ann Arbor and Ypsilanti teachers, providing them with lesson plans that encourage children of all ages to discuss and celebrate the diversity of the human family.

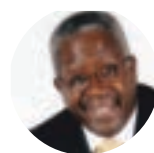
Our speakers will be:

Nancy Margolis, Director of Embracing our Differences, Michigan



Kay Wade, Director of Education, Embracing our Differences, Michigan

Lynn Settles, Art Director, Embracing our Differences, Michigan



Travis Erby, Art Judge, Embracing our Differences, Michigan



OLLI SHARED INTEREST GROUPS

JOIN AN OLLI SHARED INTEREST GROUP (SIG)

A SIG brings people together who have a common interest that they wish to pursue indefinitely within a structure of meetings and activities designed primarily by the members of the group. A SIG will strive to develop a sense of community and friendship among its members even as it endeavors to enhance members' skills, education, and experiences.

A SIG IS DIFFERENT FROM A TRADITIONAL STUDY GROUP

- ◆ A SIG does not have a formal class syllabus.
- ◆ Members of a SIG determine the content and discussion of a SIG. A designated facilitator arranges meetings, takes attendance, and initiates the discussion among the SIG members on how the group will operate.
- ◆ Persons within a SIG are assured of ongoing membership in it until they decide not to participate.
- ◆ A SIG does not have a formal ending date.
- ◆ SIGS vary in how often they meet.
- ◆ Some may be at capacity. Contact the OLLI office for information on open slots or wait lists.
- ◆ Registration in a SIG stays active as long as you want to be part of the group.

GET ADVENTUROUS AND START A NEW SIG!

A SIG may be formed by OLLI members because of a particular ongoing interest or activity (think bicycling, walking in nature) that is not offered in a study group. It may also be formed to socialize and learn together in a group that meets regularly.

Want to start a new Special Interest Group (SIG)?

Please contact OLLI Assistant Director Ryan Luttermoser at: lutterrj@med.umich.edu

NEW! A Group for Novel Writers led by Chris Siehl

**Meets every other Friday starting 9/22 from 3:00 - 5:00pm
Fee: \$70 | Virtual Only**

Have you ever thought about writing a novel or short story? Perhaps you've even jotted down notes for one. If so, this group may be for you. We are a small group focused on writing novels. We are different from memoir-writing groups; also, from creative writing groups. Most writers working on novels will benefit from being part of a small writing community, regardless of where they are in the writing process or what genre of fiction they prefer. We critique each other's work in a supportive and constructive manner. The group is kept small, with a limit of eight members.



Current Events led by Paul Wenger

**Meets every Tuesday from 3:00 - 5:00pm
Fee: \$70 | Virtual Only**

On a weekly basis, this group will discuss contemporary events that are of interest, including but not limited to domestic, international, political and academic developments that are of current and historical significance. What is discussed depends on the group's members. Our conversations are civil, and no topic or perspective is off limits.

The Future of Healthcare in the U.S. led by Bruce Friedman

**Meets the first Wednesday of the month from 1:00 - 3:00pm
Fee: \$70 | Virtual Only**

Healthcare is undergoing radical changes. Consider robotic surgery, immunotherapy for cancer, the staggering cost of new drugs, whole genome sequencing, detailed imaging of the brain, walk-in clinics in drug stores, and telemedicine. Participants in this SIG will consider one aspect of such changes each month and discuss the consequences for their families and on a national basis. Health practitioners are encouraged to register for the SIG in order to enrich the discussion with their personal expertise and knowledge.

The Schmoozery: At Our Age, In This Age led by Hank Greenspan

Meets every Wednesday from 1:00 - 2:00pm
Fee: \$70 | Virtual Only

A free-flowing discussion that develops organically. There are no set topics, but we often schmooze about family, work memories, friendship and other key relationships, core hobbies and current commitments, legacy, faith traditions, optimism and pessimism regarding the future, etc. We avoid clichés and, as comfortable, candidly share our thinking, questions, curiosities. Regular members include many who are or have been teachers, healthcare providers, or both and more. The Schmoozery began early in the pandemic and has kept going.

A Study of Ethics led by Stu Simon

Meets the first Wednesday of the month from 1:00 - 3:00pm
Fee: \$70
Virtual now, potentially becoming Hybrid

The Ethics SIG has been meeting monthly since 2020. Our discussions, facilitated by SIG members, focus on contemporary issues that pose ethical questions. Research for our topics is drawn primarily from internet-based resources. The SIG members choose future topics by vote. All new members are provided with background material on major ethical theories, as well as guidelines for facilitating discussions.

“

I've learned so much from OLLI programs over the past several years. At the same time, I've met wonderful people and enjoyed the collaborative work as an OLLI volunteer.”
— Emily Eisbruch, OLLI Volunteer

Artificial Intelligence 360 led by Deb Mukherjee

Meeting schedules are finalized by participants
Fee: \$70 | Virtual Only

The AI field continues to move at a breathtaking pace, with near-weekly announcements of surprising breakthroughs and mind-bending research - broadcast via blog posts, conference papers, web videos and media interviews. AI today is a global phenomenon. There is no AI Winter in our near future. The world moves briskly forward with object recognition, universal language translation, conversation and humanoid robots that talk, gesture and dance. Building human level machine intelligence, or AGI, embodied as robots continues to be the holy grail. This SIG is a platform for a conceptual understanding of the AI breakthroughs, and for a robust discussion on various emerging and persisting AI topics.

Currently Full SIGs

OLLI currently has seven active SIGs. Some may be at capacity. Contact the OLLI office for information on open slots or wait lists. Registration in a SIG stays active as long as you want to be part of the group.

♦ Syd Kaufman Mystery Authors Book Club

led by Wendy Mead and Tim Richards

♦ Literary Short Fiction led by Deb Mukherjee

OLLI READS

OLLI READS PRESENTS:

CELEBRATE EVERY DAY FROM THE BAKERS AT ZINGERMAN'S BAKEHOUSE

Friday, May 3, 2024 | 10:00am - 12:00pm

Cost: \$12

In-person: The Pond Room, Morris Lawrence Building, WCC

OLLI Read invites you to welcome spring with a presentation from the wizards at Zingerman's Bakehouse to discuss their newest cookbook - *Celebrate Every Day*.

It is a fun, spirited, and visually rich cookbook from the beloved Zingerman's Bakehouse which contains a full range of recipes to mark life events, seasonal holidays, and celebrations, from birthdays and weddings to tailgating, Passover, Mardi Gras, Pi Day, and more.

The first Zingerman's Bakehouse cookbook was lauded by bakers of all levels for its carefully selected recipes that yield delicious results. *Celebrate Every Day* brings that same depth of knowledge, clear instructions, fun spirit, and range of favorite recipes. Within these pages are 80 meticulously tested, delicious, and fun recipes, with more than 100 photographs and punky sidebars.

Join us as we seek to learn how to celebrate every day with delicious goodies.





OLL

STUDY GROUPS

Study groups come in a variety of formats but what they all have in common is that they are small, generally ranging in size from 6 to 30 participants. In many study groups, the leader will present material and lead a discussion afterward. In some, the discussion occurs throughout the class with the leader acting as moderator. In some, the leader and the group will take turns providing the material and leading the discussion.

Studies have found that one of the best ways to retain what one has learned in reading about a topic or listening to a lecture is to discuss it with others. In addition, discussion with a diverse group of other learners may bring new insights that would not occur otherwise.

Image: Vocation of Rurik by V. V. Dudarenko

ART AND ARCHITECTURE

Art and Identity: Ukraine's History through Artistic Eyes

In this four session study group, Carol will give a quick overview of Ukraine's visual tradition. *Bits and Bowls: Ancient Artifacts* – finding the earliest artifacts from 4000 BCE demonstrates the rich artistic tradition that continues from earliest design motifs into the present time. *The First Empire: The Rurik Dynasty* – founded in Kiev, this first dynastic order provides the basis for understanding ongoing visual and cultural traditions. *Power and Profit: The Romanov World* – the relationship between the visual culture of the Russian Empire and that of Ukraine impacts both its local and international identity. *Socialist Utopia: The 20th Century* – while one artistic style dominated the Soviet Republic of Ukraine, individual expressiveness built both on previous traditions and on ongoing experimentation.

As the education outreach coordinator at the Museum of Russian Art, **Carol Veldman Rudie** uses her college teaching skills to research and to present background to Russian art and culture. She earned her MA from the University of Minnesota and subsequently did further graduate work that included art history. Sharing her love for the visual, performance and literary arts motivates her involvement with TMORA.

Day/Time: **Wednesdays, 2:00 - 3:00pm**
 Dates: March 6 - March 27
 Instructor: **Carol Rudie**
 Location: Online only
 Cost: \$32

Opposite Ends of the Style Spectrum: Architects and their Ann Arbor Area Works (S)

This discussion will again explore two prominent architects with Ann Arbor area works, that sit on “opposite ends of the style spectrum”. We will examine their backgrounds and notable projects, while taking a deep dive into their better known area projects. We will study a local home or building to get a look “under the hood” of each, coming away with a full understanding of the design intent along with the successes and failures (if any) of each. In addition, we will aim to provide a current perspective by speaking to the occupants of these buildings and homes. Ultimately, our goal is to showcase how these architects and their works have contributed to the history and dynamics of the city of Ann Arbor.

Michael Kirchner is an Ann Arbor based architect with over 25 years of experience. Owner of Michael Kirchner Architect, specializing in residential and small commercial projects. I currently live on the west side in a renovated 1927 Craftsman Style home, with my wife, young son and dog.

Day/Time: **Wednesday, 1:30 - 3:00pm**
 Dates: May 8
 Instructor: **Michael Kirchner**
 Location: Online only
 Cost: \$12

(S) = Single Session

Art History—Paleolithic through New Kingdom Egypt

The first in a sequence of three introductory art history courses, this study group will focus on works of art that demonstrate the ways in which artists documented their world. Beginning in the pre-historic era artists painted cave paintings and carved images on stone and bison horn. In the subsequent Neolithic time period, technology and art joined to support the burgeoning agricultural society in the ancient Near East. The Sumerians, Akkadians, and Assyrians depicted their gods and religious rituals of their cultures, as well as the wars and empires that rose and fell. Contemporary with the Ancient Near Eastern civilizations were the Egyptians. I will focus on early Egyptian art and one of their pyramids as well as later sculptures of the human form, which became canonized and perfected in all media. I bring to this subject my eleven years of teaching art history at Kent State University. The diverse knowledge of the participants will lend to a lively discussion of these fabulous works of art.

Dr. Molly Lindner received a Ph.D. in the History of Art and published *Portraits of the Vestal Virgins, Priestesses of Ancient Rome*, University of Michigan Press, 2016. Dr. Lindner has taught study groups for OLLI since Fall 2019. Her OLLI survey of art history courses are now on zoom.

Day/Time: **Tuesdays, 2:30 - 4:00pm**
Dates: January 30 - March 5
Instructor: **Molly Lindner**
Location: Online only
Cost: \$42

Gallery Walks: Gauguin & Van Gogh Peregrinations of Two Pariahs

We will meet the two most popular, yet enigmatic artists to come out of the 19th century. We will watch them develop throughout their lives, separately and during the crucial nine weeks they lived and worked together. Separately and together, they changed the course of art.

Mike Kapetan is an artist. He holds an MFA degree in sculpture from the University of Michigan and a BA degree in the history of art from Harvard. He has created sacred art for more than seventy churches, synagogues, and temples. He creates abstract art in many materials, and seasonal sundials in the tradition of Stonehenge, Newgrange, and Callinish.

Day/Time: **Fridays, 1:00 - 3:30pm**
Dates: February 9 & 16
Instructor: **Michael Kapetan**
Location: Online only
Cost: \$17

Monday Painters

Our study group not only studies, we actively use any art material available to us. The students are experienced painters as well as novices. We do our homework and see weekly videos pertaining to art and help each other navigate Zoom as well as the world of art. We also appreciate each other's work and the growth we see and talk about our common interests and goals.

Barb Anderson is a retired special education teacher who used art to help teach her children as they learned in different ways that made sense to them. Since she retired, she has taken many classes and learned from expert teachers.

Day/Time: **Mondays, 1:00 - 3:00pm**
Dates: January 29 - August 19
Instructor: **Barb Anderson**
Location: Online only
Cost: \$42



CURRENT EVENTS, LAW, POLICY AND POLITICS

American Carnage: Shattering the Myths That Fuel Gun Violence

(This is a repeat of the Fall 2023 study group.) Authors Thomas Gabor and Fred Guttenberg dispute 37 myths about gun violence in America. "Misinformation is impeding our society from combatting this scourge as Americans are being misled about the dangers of gun ownership, the history of gun laws, and even our Constitution." Thomas Gabor, PhD, is a criminologist and sociologist with 35 years experience in researching and consulting in the area of gun violence. Fred Guttenberg, an anti-gun violence activist, whose daughter was a victim of the 2018 Parkland, Florida school shooting, speaks across the country on gun violence. The book was published May 2, 2023, 199 pages, and we will cover about 50 pages per session with discussion and supporting materials.

Ann Tomlanovich has been an OLLI member and volunteer for 8 years, has led 5 study groups in the topic area of Current Events, Law, Policy and Politics, and earned her JD mid-career.

Day/Time: **Mondays, 1:30pm - 3:30pm**

Date: February 12 - March 4

Instructor: **Ann Tomlanovich**

Location: Turner Senior Resource Center

Cost: \$32

AI: Is It a New Frontier for Linguistic Justice?

The widespread discussion of AI seems largely focused on its dangers and drawbacks, whether warranted or not. This study group will look at AI from a linguistic angle, exploring how the systems work with the key elements of language and language variation (sounds, words, sentences, meaning). We will examine the design, development and management of Chat GPT and other systems through the lens of linguistic justice. The basis of AI systems does not include all varieties of English, so this issue requires careful analysis. This perspective will allow participants to form a balanced view of the strengths and weaknesses of AI through an understanding of the linguistic principles in its development and use.

Alice Horning retired from teaching writing and linguistics at Oakland University and has been teaching for OLLI since 2020.

Day/Time: **Wednesdays, 10:00am - 12:00pm**

Date: April 3 - 24

Instructor: **Alice Horning**

Location: Online only

Cost: \$32

Bridging Divisions: Complexity, Curiosity and Compassion

The purpose of this study group is to learn how to reduce behaviors and attitudes which further the partisan division in our country. In past groups, we have gotten better at minimizing our stereotyping, dismissing, ridiculing and contempt and gained a better understanding of the “other side”. Interestingly, our views have not changed much. We have felt hope in this endeavor and have applied the concepts especially to family where such divisions have been so painful. We study the rapidly growing research designed to reduce polarization and apply the techniques to topics chosen by the group using current articles for reference. Come join us. Warning: This study group is not meant to replace political action and advocacy when illiberal forces threaten to undermine (yet again) the United States democratic project.

Dennis Muzzi is a retired social worker and former part-time faculty. He has been studying ways to change the tone of our high conflict, fractured public-square. This has included recent study groups for OLLI and joining Braver Angels, a national organization working to reduce polarization, where he is trained as an organizer and studying to be a moderator.

Day/Time: **Wednesdays,**
10:00am - 12:00pm

Date: March 13 - April 17

Instructor: **Dennis Muzzi**

Location: Washtenaw Community College

Cost: \$42

Prisoners of Geography

We will read and discuss the title book by Tim Marshall. Individual leaders and their politics come and go, but factors like mountains, oceans and climate continue to shape the behavior and culture of countries. Although technology provides some ways of easing these obstacles, geography has made indelible marks on them. Some examples: Why is Putin so obsessed with Crimea? Why was the US destined to become a global superpower? Why does China's power base continue to expand? Why will Europe never be united? The answers tend to be geographical. From Newsweek, “In an ever more complex, chaotic, and interlinked world, *Prisoners of Geography* is a concise and useful primer on geopolitics and a critical guide to one of the major determining factors in world affairs.” Please read the Introduction and Chapter One (pg. 1-37) for the first session.

Gerry Lapidus has conducted OLLI book discussions for many years. The classes are informal and conversational.

Day/Time: **Mondays, 1:00 - 3:00pm**

Date: March 25 - May 6

Instructor: **Gerry Lapidus**

Location: Jewish Community Center

Cost: \$42

Truth In Politics

Historian Jill Lepore, in *These Truths*, argues that democracy and self-governance depend on a search for truth: facts, proof and evidence. Using this standard, this three-session lecture discussion class will examine current American politics. Examples will come from: GOVERNMENT (recent presidential administrations, charges of election fraud, the polarization of political parties), ACADEMIA and BUSINESS (“wokeness,” “cancel culture,” the role of ideology in institutional practice), JOURNALISM (opinion versus news on cable TV and in print; libel and defamation standards), TECHNOLOGY (upholding truth on social media; free speech and censorship), SCIENCE (the pandemic—masks, closures and immunization; climate change). This broad range of examples will illustrate how changing standards of truth can threaten our institutions and our core belief systems.

Charles Monsma is Professor of Political Science, Emeritus, at Eastern Michigan University, where he served as Director of the Institute for Community and Regional Development. He received his M.P.A. in Public Administration and Ph.D. in Political Science from the University of Michigan.

Day/Time: **Wednesdays,**
10:00am - 12:00pm

Dates: February 7 - 21

Instructor: **Charles Monsma**

Location: Washtenaw Community College

Cost: \$22



FOREIGN LANGUAGE

Chinese 2

Students continue to learn basic Chinese structure, patterns and templates, and they are building strong foundations, so they can carry on Chinese conversation. Students also learn Chinese history and geography, etc.

Angela Yang retired from medical research from Howard Hughes Medical Institute and Life Science Institute, UM. She enjoys water color painting.

Day/Time: **Wednesdays, 10:00am - 12pm**

Date: February 7 - May 15

Instructor: **Angela Yang**

Location: Online only

Cost: \$42

Chinese 7

Advanced students continue to enjoy making Chinese sentences which related to their daily life, also they try to practice Chinese conversation as much as possible.

Day/Time: **Tuesdays, 11:00 am - 1:00 pm**

Date: February 6 - May 14

Instructor: **Angela Yang**

Location: Online only

Cost: \$42

STUDY GROUPS

CURRENT EVENTS, LAW, POLICY... | FOREIGN LANGUAGE



HISTORY AND CULTURE

Racism in America - The History We Didn't Learn in School

Much of the racial turmoil in our country today can be traced directly to elements of our history, even before the founding of the United States. Understanding this history gives us a foundation for action to address the profound inequities that exist in our society today. Topics include the early years, slavery by another name, public policy and the civil rights movement, mass incarceration and the war on drugs, voter suppression then and now and, importantly, where do we go from here? For most of our past, we have been unwilling or unable to discuss this more comprehensive history of America. If we are to move forward as a country to a more just and peaceful society, we must engage in these conversations.

Sue Linderman grew up in an all-white environment in Wilmington, Delaware, graduating from Mount Pleasant High School before attending Mount Holyoke College, where she earned a Bachelor of Arts degree in Political Science. The series of police shootings of

unarmed black men in recent years galvanized Sue to develop a better understanding of how we got to where we are, so that we might find meaningful ways to make progress toward justice and peace.

Day/Time: **Mondays, 11:00am - 12:30pm**

Date: February 5 - March 11

Instructor: **Sue Linderman**

Location: Online only

Cost: \$42

Magic and Medicine: A Brief History (S)

Special Collections holds sixty-one magical amulets formerly owned by Campbell Bonner, professor of Greek at the University of Michigan from 1907 to 1945. Mostly from Egypt and Syria, and produced from the 1st century B.C.E. to the 4th century C.E., these magical amulets, or magical gems, are ancient precious stones, sized between 1 to 3 centimeters, and engraved with symbolic iconography and wording, all of which was designed to provide their owners with protection against the uncertainties of life, particularly in the spheres of health, love, and prosperity. My lecture will focus on some amulets from this collection to illustrate the role of magic from antiquity throughout the Middle Ages and Early Modern Europe. Aside from these stones, I will also incorporate the evidence from papyri and medieval manuscripts.

Pablo Alvarez works as a Curator at the Special Collections Research Center at the University of Michigan. One of my main duties is to promote our collections of manuscripts and early printed books for the use of students and scholars at the U of M and beyond.

Day/Time: **Tuesday, 10:00 - 11:00am**

Date: January 30

Instructors: **Pablo Alvarez**

Location: Online only

Cost: \$12

Insights from a Life Among Holocaust Survivors

Based on over fifty years of the instructor's (a psychologist and playwright) sustained conversations with Holocaust survivors, this course will explore issues that rarely emerge in single "testimonies" or popular rhetoric. For example: How do survivors contend with such massive loss? How have they managed rage? How have they experienced us, as their listeners, over the decades since liberation? How do they assess the impact of what they have retold, especially in the context of resurgent fascism? How do they anticipate, and experience, their own dying?

Henry (Hank) Greenspan is an emeritus psychologist, oral historian, and playwright at UM. In contrast with single "testimonies," he has pursued multiple conversations with the same survivors over months, years, and—with a few people—decades. His work is internationally known.

Day/Time: **Mondays, 1:00 - 2:30pm**
 Date: February 5 - 26
 Instructor: **Henry (Hank) Greenspan**
 Location: Online only
 Cost: \$32

Healthy Chinese Cooking 1 (S)

Learn how to make healthy Chinese meals. Participants will get to sample, also take home the recipes: Tofu dip, Tofu casserole and Cashew chicken.

Angela Yang retired from medical research from Howard Hughes medical Institute and Life Science Institute, UM. She enjoys water color painting.

Day/Time: **Monday, 1:30 - 3:30pm**
 Date: March 11
 Instructor: **Angela Yang**
 Location: Turner Senior Resource Center
 Cost: \$25 (includes price of food)

Healthy Chinese Cooking 2 (S)

Learn how to make healthy Chinese meals. Participants will get to sample, also take home colorful recipes: Fried rice noodles with chicken and veg, Ma-Pa tofu and Sesame chicken with veg.

Day/Time: **Monday, 1:30 - 3:30pm**
 Date: March 25
 Instructor: **Angela Yang**
 Location: Turner Senior Resource Center
 Cost: \$25 (includes price of food)

Only Hope: My Mother and the Holocaust Brought to Light (S)

Before she died in 1974, Felicia Bornstein Lubliner wrote about her internment in ghettos and concentration camps in Nazi-occupied Poland, powerful stories published by her son. Irving Lubliner, professor emeritus at Southern Oregon University, will share excerpts from *Only Hope: A Survivor's Stories of the Holocaust*, shedding light on his mother's fortitude and indomitable spirit, as well as his own experience as a child of Holocaust survivors. You will learn about the Holocaust through the eyes of a survivor, as well as how the instructor, the child of two survivors, was impacted by his parents' experiences.

Irving Lubliner teaches math, music, and literature classes for OLLI at Southern Oregon University (SOU). An emeritus SOU professor specializing in mathematics education, he taught for 40 years (all levels, kindergarten through graduate school), led seminars for teachers in 39 states, and gave 350 conference presentations, including several keynote addresses.

Day/Time: **Monday, 2:00 - 4:00pm**
 Date: March 18
 Instructor: **Irving Lubliner**
 Location: Online only
 Cost: \$12

Cooking Capitalism: Advertising Ephemera from the Janice Bluestein Longone Culinary Archive (S)

From *Sunkist Desserts & Salads* (1915) to *Florida Citrus Fare* (1940s) to *Taste the Tropical Difference* (1992), recipe booklets and product promotion brochures offer a window into 20th century domestic life and its intersection with the growing industrialization of food production. Such publications also provide insight into changing approaches to diet and health, home making, and gender roles. Join curator Juli McLoone in the Special Collections Research Center at Hatcher Graduate Library (Room 660D) for a hands-on exploration of ten decades of advertising ephemera from the Janice Bluestein Longone Culinary Archive.

Juli McLoone is a curator in the Special Collections Research Center. She provides collection and research support for print materials published after 1700 and several of our archival collections. Some of her areas of emphasis include the Janice Bluestein Longone Culinary Archive, the Children's Literature Collection, the Hubbard Collection of Imaginary Voyages, artist's books, and literary and theatre archival collections.

Day/Time: **Monday, 10:00 - 11:30AM**

Date: March 18

Instructor: **Juli McLoone**

Location:

Special Collections Research Center

Hatcher Graduate Library South

913 S. University Ave., Ann Arbor, MI 48109

Cost: \$12

It is very important to note that there is NO parking near the library. If folks aren't comfortable walking a few to several blocks, they will want to arrange to be dropped off. We will meet in Room 660D at the far back of the Special Collections suite. If you enter the library from the South Entrance, off South University Dr, then you can simply take the elevator to the 6th floor, and as you exit the elevator lobby, you'll see the Special Collections Research Center on your left. If you enter from the North side of the library, off the Diag, then you'll need to take that elevator to the 2nd floor, cross the large room with turquoise walls, and then take the south elevator to the 6th floor.

The Heartbeat of History (S)

The heartbeat of history is the rhythm of activism, education, faith, business and service organizations that strengthen and sustain communities. In this study group we will share stories about some familiar places and unknown faces through slides and photos. You will discover local African American history with international impact from the Union Church built in 1834, to Jones School, and more compelling stories including who lived on 13th Street.

Audrey Lucas worked for the University of Michigan Health System for 47 years, the last 35 before her retirement as a human resources consultant. **Bev Willis** is the Administrator for the Washtenaw County Historical Society, vice-president of the Ann Arbor Historical Foundation and UM alumni.

Day/Time: **Monday, 1:00 -3:00pm**

Date: May 6th

Instructor: **Audrey Lucas and Beverly Willis**

Location: Turner Senior Resource Center

Cost: \$12

Ann Arbor's Bicentennial – in Black (S)

In this Study Group participants will get a glimpse into what it was like for African Americans in the early days of Ann Arbor's founding (1824-1874). Maps, census data, community history, photos and stories come together in this slideshow as an introduction to the deep and diverse history of that time.

Day/Time: **Thursday, 1:00 - 3:00pm**

Date: February 15th

Instructor: **Audrey Lucas and Beverly Willis**

Location: Turner Senior Resource Center

Cost: \$12

Black Folks: The Making of the Black Working Class

This study group will read and discuss Blair L.M. Kelley's latest book titled: *Black Folk: The Roots of the Black Working Class*. Kelley, a Professor of Southern Studies at the University of North Carolina, tells her own family's history and the stories of other families to explore the lives of black workers from the 18th century to the present. With vignettes of individuals and families, she chronicles the passage of black workers from enslaved labor to middle class, unionized employees. At each point in this progression, Kelley details the everyday experience of black workers and celebrates their resistance to the exploitation and discrimination they faced. She gives equal weight to the position of women and men as members of the formal labor force, while also honoring the role black women as the mainstays of their families. Group meetings will be informal discussions of the book and other resources. All views will be welcomed and respected.

Richard Garrett has been an OLLI member since 2020. He has led several groups dealing with public affairs and with the intersection of science and society. He has also been a research consultant for labor unions since 1989.

Day/Time: **Tuesdays, 1:30 - 3:30pm**

Date: March 19 - May 7

Instructor: **Richard Garrett**

Location: Washtenaw Community College

Cost: \$42

The Bentley Historical Library: Where Michigan's History Lives (S)

The Bentley Historical Library was established in 1935 to serve as the archives for the University of Michigan, and to document the history of the state of Michigan and the activities of its people and organizations. It is a repository of stories told from different perspectives. This session will discuss how the Bentley reaches out to individuals and organizations, and how it identifies untold stories from across the state, including those of marginalized people. There will be a discussion of how the Bentley acquires material, and how it catalogs and describes materials in order to make them available to researchers from all over the world. Archivists will also talk about how people can contribute historical materials. The program will include a tour of the Bentley.

Brian Williams is Assistant Director and Archivist for University History at the Bentley Historical Library. He joined the staff of the Bentley Library in 1994.

Day/Time: **Monday, 4:00 - 5:30pm**

Date: April 29th

Instructor: **Brian Williams**

Location: Bentley Historical Library 1150

Beal Avenue Ann Arbor, MI 48109-2113

Cost: \$12

Jewish Humor (March Session)

(This is a repeat of the Fall 2023 Study Group.) Some years ago, the magazine *Time* claimed that while Jews comprised only two percent of the American population, they made up eighty percent of America's comedians. If this is true, just how did it happen? And why did it happen? In this study group we will look into the history of Jewish humor, the growth of the humor industry, the nature of Jewish jokes, and the psychology of the joke in its Jewish context. We may not answer all of these questions or obtain a full explanation of each topic, but we will be able to smile a good deal along the way.

Rudi Paul Lindner taught at the university level for fifty years. His courses included the histories of the Silk Road, the Mongols, the medieval Near East, Byzantium, medieval Europe, modern astrophysics and cosmology. A native of California, he was abducted by aliens as a child and hopes someday to return home.

Day/Time: **Wednesdays, 2:30 - 4:00pm**

Dates: March 13 - 27

Instructor: **Rudi Lindner**

Location: Online only

Cost: \$22

Jewish Humor (May Session)

See Jewish Humor (March Session) above for course description and instructor bio.

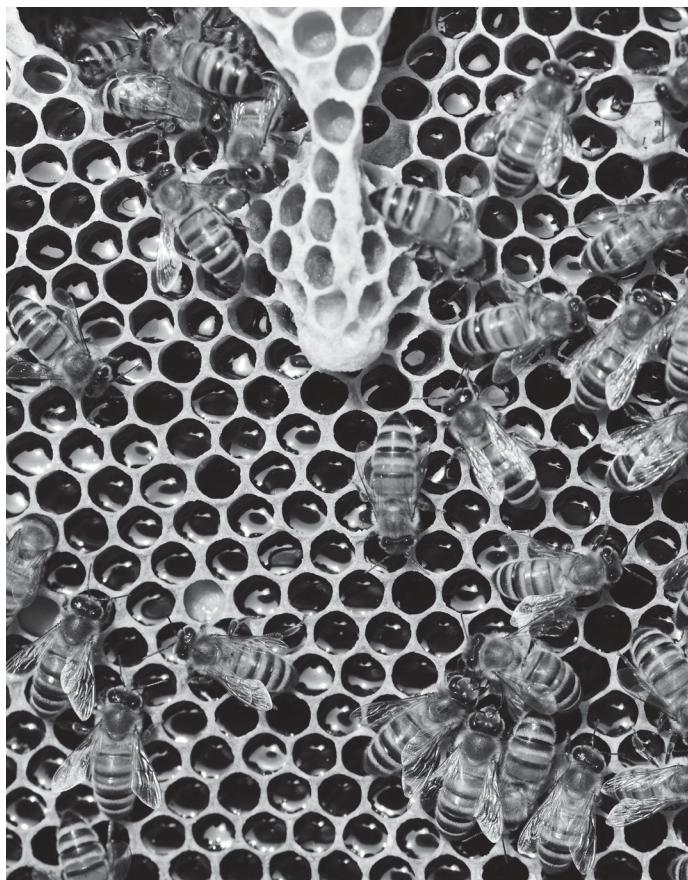
Day/Time: **Wednesdays, 2:30 - 4:00pm**

Date: May 1 - 15

Instructor: **Rudi Lindner**

Location: Online only

Cost: \$22



HOBBIES, GAMES, AND SPORTS

The Bee Lady Talks (S)

Explore the life of the honeybee in and out of the hive. Victoria Dluzen McIntyre is an amateur apiarist whose love of honeybees comes to her naturally- her family name 'Dluzen' means 'Keeper of the Bees' in Polish. Come and learn about the mysteries of the hive and how 50,000 bees work together for one common good.

Known as 'The Bee Lady,' **Victoria McIntyre** has travelled around southeastern Michigan giving talks to schools, garden clubs and civic groups.

Day/Time: **Tuesday, 1:00 -2:30pm**

Date: April 30th

Instructor: **Victoria McIntyre**

Location: Turner Senior Resource Center

Cost: \$12

Pewter Casting Workshop (S)

The process of sand casting may be thousands of years old, but it is common today across a variety of industries. It's also a fun, educational activity suitable for a wide range of makers. Makers will press and pound sand into frames around a model to create the mold, then staff pours molten pewter (lead-free, 98% tin) and, after cooling, remove the cast item and clean it up. Follow up with a tour after to explore our play space for adult hobbyists, artists, and engineers!

Maker Works instructors **Jaleesa, Daniel,** and **Dale** have backgrounds ranging from Jewelry to Video Game Animation and Electrical Engineering. All share an enthusiastic desire to share their knowledge of making with others.

Day/Time: **Sunday, 2:00 - 4:00pm**

Date: April 14th

Instructor: **Josh Williams**

Location: Maker Works

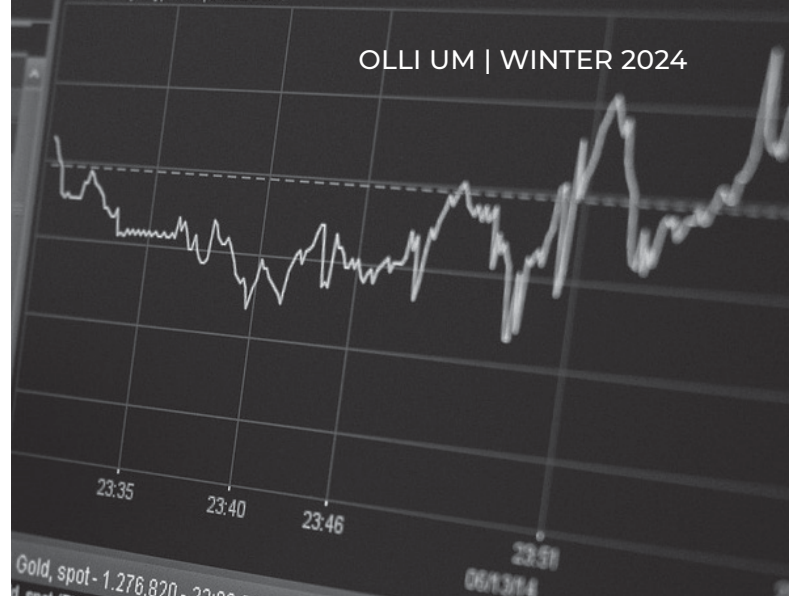
3765 Plaza Dr, Ann Arbor, MI 48108

Cost: \$12

“

What I like so much about OLLI-UM is new knowledge, meeting new people, making friends and volunteering with purpose.”

— Ann Tomlanovich,
OLLI Volunteer



INVESTING, ECONOMICS, AND FINANCE

In-Depth Investment Skills: How to Become a Savvy Investor

Learn the pros and cons of investing in mutual funds, Exchange Traded funds (ETFs), REITs, stocks, bonds, and more. Learn how to use asset allocation and diversification to reduce risk and increase return. Other topics: tax deferred investments (IRA, 401k) vs. taxable investments, indexing vs active management, duration, how to minimize taxes, why market timing does not work and much more. Focus is on practical techniques that you can use to improve your return and decrease your risk. This course will provide you with the investment tools to enable you to manage your investment portfolio yourself, or alternatively to verify your investment adviser is providing you with the highest return possible given the level of risk you are taking.

Gary Cahn has been teaching seniors investing classes for 20+ years. He received a BA from Tufts and an MBA from Dartmouth.

Day/Time: **Wednesdays, 1:00 - 3:00pm**

Date: February 21 - May 22

Instructor: **Gary Cahn**

Location: Online Only

Cost: \$42

STUDY GROUPS

HOBBIES, GAMES... | INVESTING, ECONOMICS, AND FINANCE



LITERATURE, POETRY AND DRAMA

T.S. Eliot's *Objective Correlatives*

We will read Eliot on *Objective Correlatives*, then see how they work in two novels and several short stories: *To the Lighthouse* (Woolf) *The Necklace* (Maupesant), *Sonny's Blues*, (Baldwin), *The Shawl* (Ozick), *Primum Non Nocere* (Nelson), *The Lying Life of Adults* (Ferrante).

Sharon Quiroz has a Ph.D. in English; she's taught lots of courses for OLLI.

Day/Time: **Fridays, 1:00 - 2:30pm**

Date: March 8 - May 17

Instructor: **Sharon Quiroz**

Location: Washtenaw Community College

Cost: \$42

Shakespeare: Man and Plays

A look at the man from Stratford, acknowledged as the author of some of the most memorable plays, sonnets and narrative poems the world has ever known. We'll look at his biography and the theatrical conventions in which he practiced

for the first session. We'll also vote on which play to study in more depth: *King Lear*, *Much Ado About Nothing*, *A Midsummer's Nights Dream*, *The Merchant of Venice*, or *Twelfth Night*. Your choice! Then, for three sessions, we'll closely read parts of the play, then (if technology is my friend) we'll watch video to see how actors bring the speeches to life.

Michele Roberge has been a Shakespeare fan since encountering Zeffirelli's *Romeo and Juliet* in 1968. She has worked in theatre for her entire career. Also, volunteered and taught at the OLLI at California State University, Long Beach for more than 15 years as a Shakespeare teacher.

Day/Time: **Mondays, 1:30 - 3:00 pm**

Date: April 8 - May 6

Instructor: **Michele Roberge**

Location: Turner Senior Resource Center

Cost: \$32

Stratford Festival's Shakespeare Plays 2024

An OLLI tradition, this study group will explore the Shakespeare plays presented at the 2024 Stratford Festival in Ontario, Canada: *Romeo and Juliet*, *Twelfth Night*, and *Cymbeline*. This study group will enhance the experience for everyone attending the plays at the Stratford Festival this season.

Robert Lamphear taught collegiately for over 25 years and has attended the Stratford Festival for over 50 years.

Day/Time: **Wednesdays, 1:00 - 3:00 pm**

Date: March 6 - 27

Instructor: **Robert Lamphear**

Location: Online only

Cost: \$22

SPONSORSHIP

Michael Rosenberg

Shakespeare Contemporaries: Successors

This study group concludes a series of independent study groups focusing on playwrights writing during the Elizabethan and Jacobean eras. Those playwrights following Shakespeare in the theater will be the focus of discussion. Beginning with an overview of the previous study groups and collaborations, participants will explore John Fletcher's *The Woman's Prize* (or *The Tamer Tamed*, a sequel to *The Taming of the Shrew*), Frances Beaumont's *The Knight of the Burning Pestle* and Thomas Middleton's *A Chaste Maid in Cheapside*.

Robert Lamphear taught collegiately for over 25 years.

Day/Time: **Wednesdays, 1:00 - 3:00pm**

Date: May 8 - 29

Instructor: **Robert Lamphear**

Location: Turner Senior Resource Center

Cost: \$32

The Stories of Anton Chekhov

Though best known as a playwright, Chekhov was also a gifted writer of short stories. His work influenced Hemingway, Cheever, Welty and Carver among others. This four-session study group will focus on several of Chekhov's better-known stories. The objective will be to acquaint participants with Chekhov's distinctive perspective. The emphasis will be on active discussion: participants will be encouraged to share their subjective responses to the stories. We will use *The Essential Tales of Chekhov*, edited by Richard Ford (available in paperback). Please read the following stories before attending session one: *Champagne*, *Enemies*, and *The Kiss*.

Chris Siehl is a retired educator. He has long admired Chekhov and has discussed his work as a member of various reading groups.

Day/Time: **Wednesdays, 1:00 - 3:00pm**

Date: January 31 - February 21

Instructor: **Chris Siehl**

Location: First Presbyterian Church

Cost: \$32

What Sort of Elder Do You Wish to Be?

Do you carry images of aging inherited from your parents' generation that are outdated? What sort of images do you hold---that of Wm. Shakespeare (Is second childishness and mere oblivion; sans teeth, sans eyes,...) or of Arthur Brooks (From strength to Strength)? Do you aspire to be a "juicy crone", or perhaps as the Hindu men who take a new name after retirement, a "forest dweller". Jung had said we become more reflective as we age, and thereby more introverted. Do you honor that evolving self? This class will explore varied stage theories and works of literature on what this "Third Chapter" of life can be? Erikson posited an 8 stage theory in the 1950s that still holds water in terms of the transcendence over time to an "Integrated" self, the psycho-social task of later years—"Integrity" over despair. There are unique and particular tasks for the elder in American culture. Have you given thought to this unique stage and forging what being an "elder" means to you?

Bernie Beach was a nurse, health administrator and owner of a Mindfulness business over multiple decades. She is now active in many arenas, including in Osher planning events such as the upcoming Winter Welcome.

Barb Cherem taught in higher ed for several decades preparing teachers of Special Needs children, and in P-12 for an equal amount of decades in varied educational roles. The topic is one of ongoing interest to both who have facilitated 4-5 Osher sessions together and an equal number either on their own, or with other partner teachers.

Day/Time: **Mondays, 1:00 - 3:00pm**

Date: March 25 - April 22

Instructor: **Barbara Cherem
and Bernie Beach**

Location: University Commons

Cost: \$37

Shakespeare In a Comic Vein

We will examine some of the sources of Shakespeare's comedy, both verbal and physical, by focusing on *Much Ado about Nothing* and *Twelfth Night*. We'll do some reading aloud, as well as watching productions of these plays.

Marilyn Scott taught in the UM's Great Books program and has led OLLI study groups for a decade.

Day/Time: **Mondays, 2:00 - 4:00pm**

Date: March 18 - April 22

Instructor: **Marilyn Scott**

Location: Turner Senior Resource Center

Cost: \$42

Some Perspectives on Shakespeare's *Macbeth*

Witches! Prophecies! Murder! Madness! But also a deeper look at this tragedy from the perspective of our time. Participants will first read and discuss Shakespeare's play. Then we will watch and critique several interpretations, ranging from feudal Japan (Kurosawa's *Throne of Blood*) to modern day (Patrick Stewart's 2007 London performance). We will discuss Acts One and Two at our first session. Text: any edition is acceptable.

Day/Time: **Wednesdays, 1:00 - 3:00pm**

Date: January 31 - March 6

Instructor: **Marilyn Scott**

Location: Turner Senior Resource Center

Cost: \$42



MUSIC, THEATRE, AND FILM

Films Portraying Families in the US: What We Can Learn about Ourselves and Others (Hybrid)

The class will use selected segments to promote stimulating discussions about the families shown in four films about families in different life stages and formations. During each session we will discuss one film: *Boyz n the Hood* (1991), *This Boy's Life* (1993), *Lady Bird* (2017), and *Marriage Story* (2019). Participants may choose to view the whole film at home and/or ponder the concepts and discussion questions that will be provided before each session. We will look at families in different stages of their lives and their relationships. We will explore what is similar and different about these families and how they help us think about our world.

Arlene Weisz is a retired social worker and social work professor who enjoyed using films as part of teaching about families for about 20 years. There is so much to learn and think about when viewing films about families!

Day/Time: **Tuesdays, 1:30 - 3:30pm**

Date: March 5 & 19, April 2 & 16

Instructor: **Arlene Weisz**

Location: Turner Senior Resource Center

Cost: \$32

Modern Classics: Detective Mystery Fiction On Film

We will screen two modern detective mystery fiction films. *Body Heat* (1981), writer and director Lawrence Kasdan's sultry modern noir. *Witness* (1985), director Peter Weir's Fish Out of Water cop thriller.

Scheduled films are subject to change, as streaming service availability may change. Each film will have two online meeting sessions: a presentation meeting on a Friday, and a discussion meeting the following Tuesday. Watch the film at home in between the two meetings. All films are available to rent online (such as Amazon, YouTube, and AppleTV). Some films can be accessed through a streaming service subscription (such as Showtime or Paramount+).

George Ferrell is a retired business executive (human resources and data analysis) and teacher (algebra and calculus), with a life-long fondness for mystery novels. Thanks to Cinema Guild, Michigan Theater, Ann Arbor's plentiful movie theaters, and the VCR and DVDs, he's been devouring films as well. A few years ago he had a little idea about a study group about detective mystery films, featuring Miss Marple. Since then he has shared more than 40 films in his study groups.

Day/Time: **Tuesdays & Fridays,**

1:00 - 2:30pm

Date: March 8 & 12, April 5 & 9

Instructor: **George Ferrell**

Location: Online only

Cost: \$32



RELIGION, PHILOSOPHY, AND SPIRITUALITY

Why Zebras Don't Get Ulcers

As we read and discuss *Why Zebras Don't Get Ulcers*, by Robert Sapolsky, we will see how emotions and personality can have a tremendous impact on the functioning and health of virtually every cell in the body. We will learn how we can successfully handle stress and increase our resilience. We worry about our problems all the time. From terrorist attacks, job stress or relationships to bad traffic or a quarrel with a friend, we replay past situations and agonize about future ones. We call this stress, and it triggers the same emergency response in the body as being caught in an earthquake. It is about the role of stress in making some of us more vulnerable to disease, the ways in which some of us cope with stressors, and to teach, with a minimum of pain, how various hormones and parts of the brain are mobilized in response to stress. We then focus on the links between stress and increased risk for certain types of disease, and the effects of stress on the circulatory system, on energy storage, on growth, reproduction, the immune system, and so on.

Mike Murray has been teaching classes for OLLI for the past fifteen years. His background as a psychotherapist has equipped him to teach classes on Positive Psychology and he has practiced and taught many classes on Mindfulness.

Day/Time: **Wednesdays, 10:00 - 11:30am**

Date: February 28 - April 3

Instructor: **Mike Murray**

Location: Online only

Cost: \$42

STUDY GROUPS

MUSIC, THEATRE, AND FILM | RELIGION, PHILOSOPHY...



STEM (SCIENCE, TECHNOLOGY, ENGINEERING, MATHEMATICS)

Gene Editing and Our Food

You may have heard of a gene-editing technique called CRISPR that is being used to treat inherited genetic disorders and even to make designer babies. But did you know it's also being used to improve both the sustainability of food production and the nutritional value of our fruits and vegetables? The first products have been approved for sale in the US this year. Will you eagerly adopt or shun these modified foods? Through lecture, videos, and discussion, learn about CRISPR technology and the alternative ways that it is being used to change our food.

Bryan McKersie, Ph.D. in Biology, was a professor for 20 years at the University of Guelph, Canada. He then worked with BASF in North Carolina for 15 years managing international research projects in plant biotechnology. In retirement, Bryan writes about research project management and genetics. He is a member of OLLI at the University of North Florida in Jacksonville.

Day/Time: **Wednesdays, 1:30 - 3:00pm**
Date: February 7 - March 13
Instructor: **Bryan McKersie**
Location: Online only
Cost: \$42

Keeping Safe with Online Transactions (S)

Conducting transactions online is now easier and more prevalent than ever. But what are the security risks of doing your banking on a website? What about purchasing a product or paying a bill online with a credit card? How do Venmo and Apple Pay work exactly, and are they safe? How do I protect my identity? These are some of the topics Jim Keen will explore in his presentation: Keeping Safe with Online Transactions.

Jim Keen holds a B.A. in communications and an M.A. in educational studies from the University of Michigan. He currently owns and operates Keen Focus Technology Tutoring.

Day/Time: **Wednesday, 10:30am - 12:00pm**
Date: January 31
Instructor: **Jim Keen**
Location: Jewish Community Center
Cost: \$12

Overview of String Theory

This course is based on a new Great Courses series presented by Prof. Shamit Kachru, Chair of the Physics Department at Stanford University. His objective is not to teach string theory (impossible in a course like this), but to introduce us to the "big picture": the motivation for the theory, the basic concepts behind it, and what it can tell us about the nature of the universe. String theory may or may not prove to be right, but it is a rich and fascinating subject in either case. We will view and discuss two half-hour lectures each session. Please visit tinyurl.com/Strings23A for a longer course description and tinyurl.com/Strings23B for the Great Courses website.

Craig Stephan is a retired industrial physicist who runs the Science Pop-Up series and has led many previous OLLI courses including Cosmology, the Higgs Boson, Astrophysics, and The Science of Climate Change.

Day/Time: **Tuesdays, 1:00 - 3:00pm**

Date: February 6 - March 12

Instructor: **Craig Stephan**

Location: Trinity Lutheran Church

Cost: \$42

The Evolving Universe: Physics, Complexity, and Selection

We'll view the 12-lecture series about the Higgs boson and the standard model of particle physics by Sean Carroll. The idea for the Higgs boson came from condensed matter physicist Philip Anderson, who realized that something other than the reductionist approach is needed to understand our universe. We'll watch lectures on chaos and complexity to see their contributions, as well as Robert Hazen's last lecture of *The Origin and Evolution of Earth*, emphasizing the changes in life and by life on Earth's minerals. Finally, we'll discuss the recently published *Roles of Function and Selection in Evolving Systems*.

Dick Chase worked 27 years as a research physicist for Ford and taught physics at several levels. At OLLI, he has hosted 25 science study groups and led 5 book discussion groups.

Day/Time: **Wednesdays, 1:00 - 3:00pm**

Date: January 31 - April 17

Instructors: **Dick Chase**

Location: Trinity Lutheran Church

Cost: \$42



SOCIAL SCIENCE

The Art and Practice of Mindful Self-Compassion

Do you tend to be “hard on” yourself when you make a mistake? Self-compassion is simply the process of turning compassion inward. We are kind and understanding rather than harshly self-critical when we fail, make mistakes or feel inadequate. We give ourselves support and encouragement rather than being cold and judgmental when challenges and difficulty arise in our lives. Research indicates that self-compassion is one of the most powerful sources of coping and resilience we have available to us, radically improving our mental and physical wellbeing. It motivates us to make changes and reach our goals not because we're inadequate, but because we care and want to be happy. This class is a good place to start on your journey of leaning to be more self-compassionate.

Bernadette Beach is a registered nurse with a long practice of mindfulness meditation and holistic stress management programs. She has taught several classes at OLLI and introduces the science of a variety of modalities, helpful in managing stress. Classes are interactive allow time and space for deep sharing.

Day/Time: **Wednesdays, 1:00 - 3:00pm**

Date: February 7 - March 13

Instructor: **Bernie Beach**

Location: University Commons

Cost: \$42

Lessons in Diversity from a Prison Classroom (S)

This discussion will focus on ways to reach across the differences of age, race, cultural, religious and political groups to become more informed and caring. **Judy Wenzel** taught high school classes in the federal prison in Milan to men of all ages, cultural, racial and religious backgrounds. Her students had unique opportunities in very crowded conditions, which helped them learn about differences. Those situations created compassion, hospitality, support and fun. Participants will be encouraged to share their own backgrounds, experiences and challenges.

Day/Time: **Tuesday, 11:00am - 1:00pm**

Date: April 2

Instructor: **Judy Wenzel**

Location: Turner Senior Resource Center

Cost: \$12

How to Know a Person

We will read and discuss the title book by David Brooks of the NY Times. All around us are people who feel invisible, unseen and misunderstood. In *How to Know a Person*, Brooks sets out to help us do better by posing essential questions. For example, If you want to know a person, what kind of attention should you give them? What kind of conversations should you have? What parts of a person's story should you pay attention to? He draws from the fields of psychology and neuroscience and from the worlds of theater, philosophy, history and education. Brooks offers a possible remedy for a society riven by fragmentation, hostility and misinformation. Please read Chapt 1 and 2 (pg. 3-27) for the first session.

Gerry Lapidus has conducted OLLI book discussions for many years. The classes are informal and conversational.

Day/Time: **Mondays, 1:00 - 3:00pm**

Date: January 29 - March 11

Instructor: **Gerry Lapidus**

Location: Online only

Cost: \$42

The Complexity of Free Speech (S)

The topic of free speech is complex. How can individual rights guaranteed by the First Amendment be protected while still preventing harm to society? This Study Group will first explore the intentions of our founders and then proceed to significant court cases required for interpretation. The group will ponder the role of government, the media, private institutions, and universities in regulating speech. Material for this study group was originally developed for the OLLI Ethics SIG and was very well received. As with all SIG topics, the format includes both lecture and discussion. Background material and questions for discussion will be provided in advance for study group registrants. Pre-reading is expected.

Stu Lockman is a retired lawyer who specialized in health care, where many ethical questions were explored.

Day/Time: **Friday, 1:00 - 3:00 pm**

Date: February 2

Instructor: **Stu Lockman**

Location: Online only

Cost: \$12

Cognitive Biases: We All Have Them and How to Reduce Their Impact on our Decisions (S)

This lecture will review the most common cognitive biases that people have and discuss ways to minimize their impact on decision-making.

Jerry Miller is an Emeritus faculty member in the UM Department of Psychology where he taught undergraduate and graduate courses for over 40 years. He also maintained a clinical practice serving children, adults and couples.

Day/Time: **Wednesday,**

10:00 am - 12:00pm

Date: March 27th

Instructor: **Jerry Miller**

Location: Washtenaw Community College

Cost: \$12

A “City’s Conscience”: The Life and Career of Josephine Gomon (S)

This lecture provides an illustrated overview of the life and career of Josephine Gomon, called the “conscience” of Detroit by the Free Press when she died in 1975. Participants will learn about Gomon’s many influential roles in Detroit, including executive secretary to Mayor Frank Murphy and director of the Detroit Housing Commission, as well as Director of Women Personnel at the Willow Run plant during World War II. Gomon also worked for reproductive rights, racial justice, and civil liberties. Her extraordinary career illuminates state and national history as well as the complexities of women’s roles in twentieth-century America.

Michelle McClellan earned her Ph.D. in American history from Stanford University and her M.S.I. from the University of Michigan.

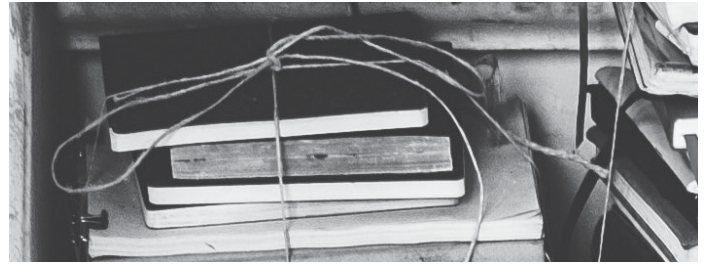
Day/Time: **Friday, 1:00 - 3:00pm**

Date: April 19th

Instructor: **Michelle McClellan**

Location: Washtenaw Community College

Cost: \$12



WRITING

Writing Our Stories

Participants will learn how to tell the stories of their lives and those of their ancestors. We will meet weekly, and each participant should be prepared to read a story they have written (including the first class).

Jan Price calls herself an amateur memoirist, having started writing short story memoirs after her retirement. She now teaches and motivates other seniors.

Day/Time: **Fridays, 9:30 - 11:30am**

Date: February 2 - April 19

Instructor: **Janis Price**

Location: Online only

Cost: \$42

Writers Unlimited

Members read their written pieces (in any genre) to the group and receive friendly, but constructive, criticism to improve the material. In the past, members have read their novels, essays, short stories, or poems. Comments from the group range from suggestions for alternative words and punctuation to comments on the themes and plot. The study group has met for more than seventeen years with many changes of members. **Jerry Janusz** has led the group for fourteen years.

Day/Time: **Fridays, 10:00am - 12:00pm**

Date: February 2 - August 23

Instructor: **Jerry Janusz**

Location: Online only

Cost: \$42

THE CENTER FOR PUBLIC HUMANITIES AT OAKLAND UNIVERSITY

The Center for Public Humanities at Oakland University in cooperation with OLLI is offering three public events this winter. All events will be available to the public via Zoom; guests are welcome on campus for the in-person events. These events are free to all OLLI-UM members.

Spreading the Word: Revisiting Dr. Johnetta Brazzell and the Pontiac Oral History Archive (S)

The Pontiac Oral History Archive was created because of Dr. Brazzell's interviews in the 1970s with elderly African American residents of Pontiac, Michigan. This event will highlight important new work emerging from this oral history collection, including excerpts from podcasts based on the recordings, comments from living relatives of those interviewed decades ago, and a digital tour of the Pontiac Oral History Archive, publicizing its availability for community use.



Day/Time: **Thursday, 12:00pm**

Date: January 25

Instructor: **Dr. Johnetta Brazzell**

Location: 242 Kresge Library (The Nyberg Room), Oakland University—and via Zoom.

Cost: Free

The Address Book: What Street Addresses Reveal about Identity, Race, Wealth, and Power by Deirdre Mask (S)

What can addresses tell us about who we are and how we live together? Deirdre Mask looks at the fate of streets named after Martin Luther King, Jr., how ancient Romans found their way, and why Bobby Sands is memorialized in Tehran. She explores why it matters if, like millions of people today, you don't have an address. From cholera epidemics to tax hungry monarchs, Mask discovers the different ways street names are created, celebrated, and in some cases, banned.



According to the Google Books website:

Deirdre Mask graduated from Harvard College summa cum laude, and attended the University of Oxford before returning to Harvard for law school, where she was an editor of the Harvard Law Review. Her writing has appeared in The New York Times, The Atlantic, and The Guardian. Originally from North Carolina, she has taught at Harvard and the London School of Economics.

Day/Time: **Thursday, 12:00pm**

Date: January 25

Instructor: **Deirdre Mask**

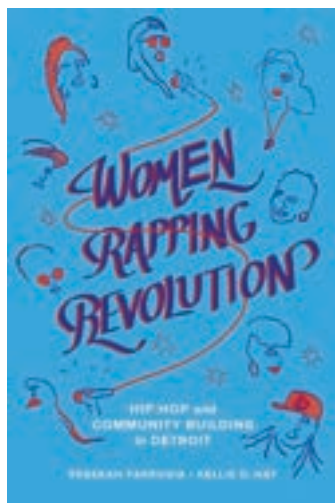
Location: Zoom

Cost: Free

Women Rapping Revolution (S)

Kellie Hay and Rebekah Farrugia, both professors in the Department of Communication, Journalism and Public Relations will discuss their book, *Women Rapping Revolution: Hip Hop and Community Building in Detroit*, with performances by Piper Carter, NiqueLoveRhodes, and Stacye J.

Detroit, Michigan, has long been recognized as a center of musical innovation and social change. Rebekah Farrugia and Kellie D. Hay draw on seven years of fieldwork to illuminate the important role that women have played in mobilizing a grassroots response to political and social pressures at the heart of Detroit's ongoing renewal and development project. Focusing on the Foundation, a women-centered hip hop collective, *Women Rapping Revolution* argues that the hip hop underground is a crucial site where Black women shape subjectivity and claim self-care as a principle of community organizing. Through interviews and sustained critical engagement with artists and activists, this study also articulates the substantial role of cultural production in social, racial, and economic justice efforts.



Day/Time: **Thursday, 7:00pm**

Date: March 28

Instructors: **Kellie Hay and Rebekah Farrugia**

Location: Oakland Center, Founders Ballroom A, Oakland University – and via Zoom.

Cost: Free

KNIGHT-WALLACE FELLOWS AND THEIR JOURNALISM PROJECTS

The Knight-Wallace Fellowships provide accomplished journalists an academic year of study, collaborative learning and access to the resources of the University of Michigan to pursue ambitious journalism projects, tackle challenges facing the journalism industry and participate in weekly private seminars with journalism leaders, renowned scholars, media innovators and social change agents. This cohort marks the 50th class of fellows in the program's history.

When Climate Change and Environmental Racism Converge: Who Will be Left Behind? (S)

As communities and media organizations deepen their focus on the effects of climate change, more reporting, advocacy, and action are beginning to be directed toward environmental racism, the disproportionate placement of hazardous materials near marginalized communities. Aguilera will focus on the convergence of climate change and environmental racism in devastated areas of the U.S. She will investigate potential public policies and programs that could help residents when increased heat, fire, drought, and sea level rise affect their ability to live. She will also examine what happens when wealthier residents move elsewhere due to climate change– and leave the most vulnerable behind.

Elizabeth Aguilera is an independent multimedia journalist focused on environmental health and equity. She is an editor-at-large for Zócalo Public Square and a mentor and editor for Next Gen Radio. She also writes for the Association of



Health Care Journalists. Aguilera previously worked at CalMatters, where she covered children/youth and health care and co-hosted a political podcast. She has also worked for Southern California Public Radio, The San Diego Union-Tribune, and The Denver Post, covering various beats from urban affairs to immigration to community health. Aguilera co-founded the Migratory Notes newsletter, which analyzed immigration news and was published weekly for four years. She is a Los Angeles native and a graduate of Pepperdine University and the University of Southern California.

Day/Time: **Wednesday, 2:00 – 3:00pm**

Date: April 17

Instructors: **Elizabeth Aguilera**

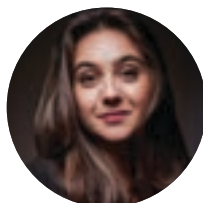
Location: Online only

Cost: \$12

The War for Hearts and Minds: Populism's Battle with the Media (S)

As a journalist and later as press secretary to President Zelenskyy, Mendel met many political leaders– including Vladimir Putin, Alexander Lukashenko, Jair Bolsonaro, and Donald Trump– with populist platforms that simplified complex issues and appealed to citizens' strongest emotions. She found that populism today is often based on disinformation that is easily amplified by social media and new technologies and easily exploited by populist leaders in both democratic and autocratic contexts. Mendel's research will seek solutions to protect and empower truth-seeking journalists around the world in a climate of growing populism.

Julia Mendel is a Ukrainian journalist, political commentator and opinion writer for The Washington Post. Her work has appeared in The New York Times, Politico Europe, VICE,



the Evening Standard, World Affairs Journal, Kyivpost, Spiegel Online and CNBC. After several years as a television journalist, and a fellowship with the World Press Institute in Minnesota, Mendel served as Ukrainian President Volodymyr Zelenskyy's press secretary from June 2019 to July 2021. Her 2022 book, "The Fight of Our Lives," covers Ukrainian politics, the Russian war against Ukraine and her work with President Zelenskyy. Mendel comes to the university as a Knight-Wallace Fellow and a WCEE Distinguished Fellow and will actively participate with both units during her time in Ann Arbor.

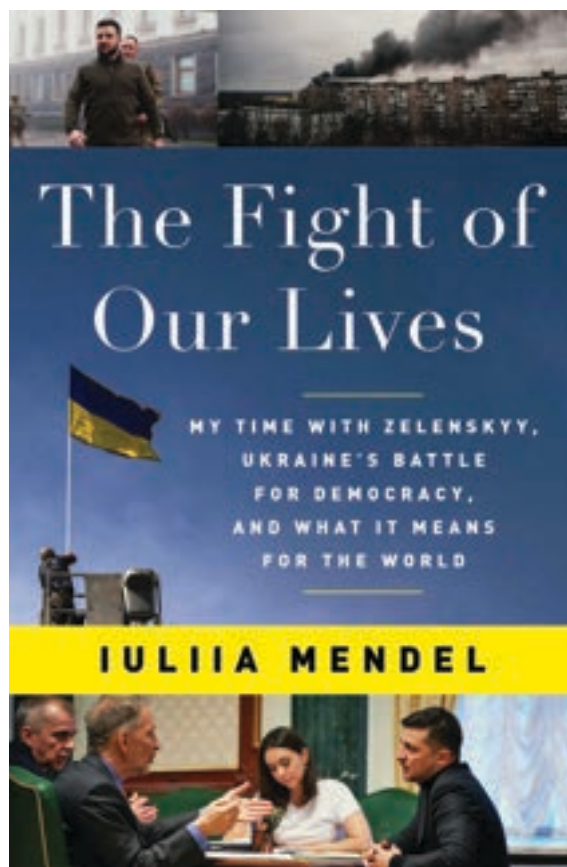
Day/Time: **Wednesday, 2:00 – 3:00pm**

Date: April 24

Instructors: **Julia Mendel**

Location: Online only

Cost: \$12



Study Groups Meeting Locations

1) Turner Senior Resource Center

2401 Plymouth Rd, Ann Arbor, MI 48105
(734) 998-9353

2) Bentley Historical Library

1150 Beal Ave, Ann Arbor, MI 48109
(734) 764-3482

3) Washtenaw Community College

4800 E Huron River Dr, Ann Arbor, MI 48105
(734) 973-3300

4) Trinity Lutheran Church

1400 W Stadium Blvd #5353, Ann Arbor, MI 48103
(734) 662-4419

5) University Commons

817 Asa Gray Dr, Ann Arbor, MI 48105
(734) 332-1221

6) First Presbyterian Church

1432 Washtenaw Ave, Ann Arbor, MI 48104
(734) 662-4466

7) Jewish Community Center

2935 Birch Hollow Dr, Ann Arbor, MI 48108
(734) 971-0990

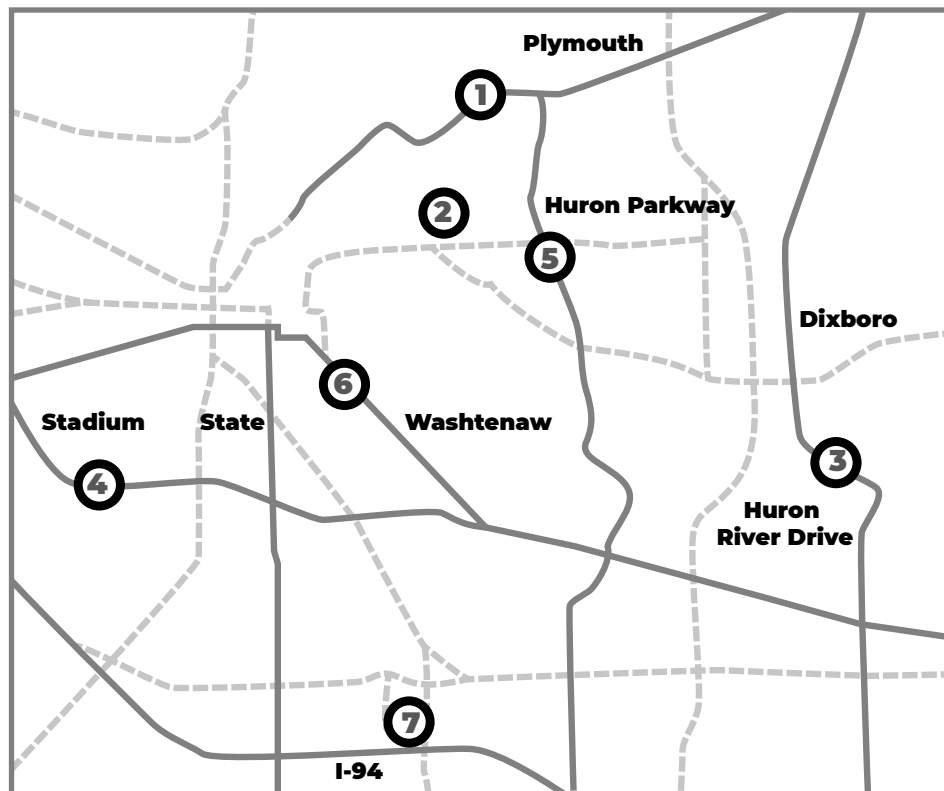


Photo: Newberry Hall, Dave Parker, Creative Commons Attribution 3.0 Unported. <https://creativecommons.org/licenses/by/3.0>



Get Involved With OLLI

WE NEED OLLI VOLUNTEERS TO:

- ◆ teach a study group
- ◆ help with Big Hearts for Seniors
- ◆ serve on a committee
- ◆ plan an event
- ◆ lead a Shared Interest Group (SIG)
- ◆ audit lecture recordings
- ◆ organize a lecture
- ◆ serve on OLLI's Leadership Council

Join a Committee!

The OLLI-UM Leadership Council has 16 committees and several ad hoc committees that perform many vital, critical, and creative functions.

Lectures

TBA

Study Groups

Ann Tomlanovich, anntomlanovich@me.com

Evenings with OLLI

Emily Eisbruch, eisbruchs@gmail.com

Shared Interest Groups

TBA

Social Interaction

Bernie Beach, bbeach0427@gmail.com

OLLI Out of Town

Mary Sherrill, marysherrill@comcast.net

Diversity, Equity and Inclusion (DEI)

TBA

Finance

Stuart Lockman,
stuartlockman@gmail.com

Development/Fundraising

Susan Fisher, srfisher@umich.edu

Strategic Communications

TBA

Please contact the chair to become a member of the committees that appeal to you. Or contact OLLI-UM Director Angela Bingham, anabi@umich.edu or 734-998-9356.

Make a Gift to OLLI-UM

We each have our own reasons for enjoying OLLI! Whatever your OLLI passion, your financial support can make a difference in ensuring that OLLI continues to flourish and expand.

IF

♦ OLLI was there for you when you needed it most this year...

- ♦ you appreciate OLLI's low fees and scholarships to those in need...
- ♦ you are proud of how OLLI responded during the pandemic so members could stay connected...

THEN

please consider making a donation to OLLI. No amount is too big or too small.



OLLI-UM ANNUAL FUND (HELPS WITH TODAY'S NEEDS!)

While OLLI receives generous in-kind support from UM, a gift to the OLLI Annual Fund ensures membership and events remain affordable and available to all. While OLLI members and volunteers provide a strong foundation of skills, annual support from donors is needed to maintain and grow operations and meet the needs of our community. Donors contributing \$100 or more annually are listed on the OLLI Donor Honor Roll. Sponsorships of lectures also support the Annual Fund and sponsors are included on the Honor Roll listing.

FRIENDS OF OLLI-UM ENDOWMENT (HELPS SUSTAIN OLLI'S FUTURE NEEDS!)

The Friends of OLLI Endowment was created to ensure OLLI will continue to enrich the lives of others well into the future. Endowment funds are key to ensuring the flexibility of OLLI to respond to current and future needs such as technology, space, programs and access.

HOW YOU CAN GIVE:

To contribute online by credit card please go to: giving.umich.edu/give/med-osher.

To contribute by mail please see the registration form in the center of the catalog.

Click on the Donate Now button on the **weekly OLLI emails** - takes you right to the donor page.

To make a gift or for more information, please contact: Susan Fisher, OLLI Development Chair, at srfisher@umich.edu or (734) 669-8866.

CONSIDER

- ♦ Making an outright donation to the annual fund or endowment
- ♦ Sponsoring a lecture or lecture series or sponsoring study groups (new!)
- ♦ Making a donation in honor or memory of a friend or loved one
- ♦ Pledging a gift over three-five years
- ♦ Making a qualified charitable distribution from your IRA to satisfy your annual required minimum distribution (RMD)
- ♦ Naming the OLLI Endowment Fund as a beneficiary of your retirement account and/or as a bequest in your estate or revocable living trust
- ♦ Donations may be specified for membership or scholarships for all OLLI offerings

STUDY GROUPS IN ALPHA ORDER

S = Single Class

A – C	
A “City’s Conscience”: The Life and Career of Josephine Gomon (S)	61
AI: Is It a New Frontier for Linguistic Justice?	45
<i>American Carnage: Shattering the Myths That Fuel Gun Violence</i>	45
Ann Arbor’s Bicentennial – in Black (S)	50
Art and Identity: Ukraine’s History through Artistic Eyes	43
Art History I—Paleolithic through New Kingdom Egypt	44
Black Folks: The Making of the Black Working Class	51
<i>Bridging Divisions: Complexity, Curiosity and Compassion</i>	46
Chinese 2	47
Chinese 7	47
Cognitive Biases: We All Have Them and How to Reduce Their Impact on our Decisions (S)	61
Cooking Capitalism: Advertising Ephemera from the Janice Bluestein Longone Culinary Archive (S)	50
F – H	
Films Portraying Families in the US: What We Can Learn about Ourselves and Others	56
Gallery Walks: Gauguin & Van Gogh Peregrinations of Two Pariahs	44
Gene Editing and our Food	58
Healthy Chinese Cooking 1	49
Healthy Chinese cooking 2	49
<i>How to Know a Person</i>	47
I – L	
In-Depth Investment Skills: How to Become a Savvy Investor	53
Insights from a Life among Holocaust Survivors	49
Jewish Humor (March Session)	52
Jewish Humor (May Session)	52
Keeping Safe with Online Transactions (S)	58
Lessons in Diversity from a Prison Classroom (S)	47

S = Single Class

M-R	
Magic and Medicine: A Brief History (S)	48
Modern Classics: Detective Mystery Fiction On Film	57
Monday Painters	44
Only Hope: My Mother and the Holocaust Brought to Light (S)	49
Opposite Ends of the Style Spectrum: Architects and their Ann Arbor area works (S)	43
Overview of String Theory	58
Pewter Casting Workshop (S)	53
<i>Prisoners of Geography</i>	46
Racism in America - The History We Didn't Learn in School	48
S - T	
Shakespeare Contemporaries: Successors	55
Shakespeare In a Comic Vein	56
Shakespeare: Man and Plays	54
Some Perspectives on Shakespeare's MacBeth	56
Stratford Festival's Shakespeare Plays 2024	54
T.S. Eliot's <i>Objective Correlatives</i>	54
The Art and Practice of Mindful Self-compassion	59
The Bee Lady Talks (S)	42
The Bentley Historical Library: Where Michigan's History Lives (S)	51
The Complexity of Free Speech (S)	48
The Evolving Universe: Physics, Complexity, and Selection	59
The Heartbeat of History (S)	50
The Stories of Anton Chekhov	55
Truth In Politics	46
W	
What Sort of Elder Do you wish to be?	55
<i>Why Zebras Don't Get Ulcers</i>	57
Writers Unlimited	61
Writing Our Stories	61

STUDY GROUPS BY DAY OF THE WEEK

S = Single Class

MONDAY	DATE	PAGE
<i>How to Know a Person</i>	1/29	47
Monday Painters	1/29	44
Racism in America - The History We Didn't Learn in School	2/5	48
Insights from a Life among Holocaust Survivors	2/5	49
<i>American Carnage: Shattering the Myths That Fuel Gun Violence</i>	2/12	45
Cooking Capitalism: Advertising Ephemera from the Janice Bluestein Longone Culinary Archive (S)	3/18	50
Only Hope: My Mother and the Holocaust Brought to Light (S)	3/18	49
<i>Prisoners of Geography</i>	3/25	46
What Sort of Elder Do You Wish to Be?	3/25	55
Shakespeare In a Comic Vein	3/18	56
Shakespeare: Man and Plays	4/8	54
The Bentley Historical Library: Where Michigan's History Lives (S)	4/29	51
The Heartbeat of History (S)	5/6	50

TUESDAY	DATE	PAGE
Magic and Medicine: A Brief History (S)	1/30	48
Art History I—Paleolithic through New Kingdom Egypt	1/30	44
Overview of String Theory	2/6	58
Chinese 7	2/6	47
Films Portraying Families in the US: What We Can Learn about Ourselves and Others	3/5	56
Lessons in Diversity from a Prison Classroom (S)	4/2	47
Black Folks: The Making of the Black Working Class	3/19	51
The Bee Lady Talks (S)	4/30	42

S = Single Class

WEDNESDAY	DATE	PAGE
Keeping Safe with Online Transactions (S)	1/31	58
Some Perspectives on Shakespeare's MacBeth	1/31	56
The Evolving Universe: Physics, Complexity, and Selection	1/31	59
The Stories of Anton Chekhov	1/31	55
Chinese 2	2/7	47
Truth in Politics	2/7	46
The Art and Practice of Mindful Self-Compassion	2/7	59
Gene Editing and our Food	2/7	58
In-Depth Investment Skills: How to Become a Savvy Investor	2/21	53
<i>Why Zebras Don't Get Ulcers</i>	2/28	57
Stratford Festival's Shakespeare Plays 2024	3/6	54
Gene Editing and our Food	3/6	58
Art and Identity: Ukraine's History through Artistic Eyes	3/6	43
Jewish Humor	3/13	52
Cognitive Biases: We All Have Them and How to Reduce Their Impact on our Decisions (S)	3/27	61
AI: Is It a New Frontier for Linguistic Justice?	4/2	45
Shakespeare Contemporaries: Successors	5/8	55

THURSDAY	DATE	PAGE
Ann Arbor's Bicentennial – in Black (S)	2/15	50

FRIDAY	DATE	PAGE
Writers Unlimited	2/2	61
The Complexity of Free Speech (S)	2/2	48
Modern Classics: Detective Mystery Fiction On Film	2/2	57
Gallery Walks: Gauguin & Van Gogh Peregrinations of Two Pariahs	2/9	44
T.S. Eliot's <i>Objective Correlatives</i>	3/8	54
A "City's Conscience": The Life and Career of Josephine Gomon (S)	4/19	61
Writing Our Stories	2/2	61

STUDY GROUPS BY START DATE

S = Single Class

JANUARY	CLASSES	DATE	PAGE
Monday Painters	28	1/29	44
<i>How to Know a Person</i>	7	1/29	47
Art History I--Paleolithic through New Kingdom Egypt	6	1/30	44
Magic and Medicine: A Brief History (S)	1	1/30	48
Keeping Safe with Online Transactions (S)	1	1/31	58
Some Perspectives on Shakespeare's MacBeth	6	1/31	56
The Evolving Universe: Physics, Complexity, and Selection	12	1/31	59
The Stories of Anton Chekhov	4	1/31	55
FEBRUARY	CLASSES	DATE	PAGE
Writers Unlimited	28	2/1	61
Writing Our Stories	12	2/2	61
The Complexity of Free Speech (S)	1	2/2	48
Modern Classics: Detective Mystery Fiction On Film	4	2/2	57
Racism in America - The History We Didn't Learn in School	6	2/5	48
Insights from a Life among Holocaust Survivors	4	2/5	49
Chinese 7	15	2/6	47
Overview of String Theory	6	2/6	58
Chinese 2	15	2/7	47
Truth in Politics	3	2/7	46
The Art and Practice of Mindful Self-Compassion	6	2/7	59
Gene Editing and our Food	6	2/7	58
Gallery Walks: Gauguin & Van Gogh Peregrinations of Two Pariahs	2	2/9	44
<i>American Carnage: Shattering the Myths That Fuel Gun Violence</i>	4	2/12	45
Ann Arbor's Bicentennial – in Black (S)	1	2/15	50
In-Depth Investment Skills: How to Become a Savvy Investor	14	2/21	53
<i>Why Zebras Don't Get Ulcers</i>	6	2/28	57

S = Single Class

MARCH	CLASSES	DATE	PAGE
Films Portraying Families in the US: What We Can Learn about Ourselves and Others	4	3/5	56
Stratford Festival's Shakespeare Plays 2024	4	3/6	54
Art and Identity: Ukraine's History through Artistic Eyes	4	3/6	43
T.S. Eliot's <i>Objective Correlatives</i>	10	3/8	54
Jewish Humor—March Session	3	3/13	52
Cooking Capitalism: Advertising Ephemera from the Janice Bluestein Longone Culinary Archive (S)	1	3/18	50
Only Hope: My Mother and the Holocaust Brought to Light (S)	1	3/18	49
Shakespeare In a Comic Vein	6	3/18	56
Black Folks: The Making of the Black Working Class	8	3/19	51
<i>Prisoners of Geography</i>	7	3/25	46
What Sort of Elder Do you wish to be?	5	3/25	55
Cognitive Biases: We All Have Them and How to Reduce Their Impact on our Decisions (S)	1	3/27	61
APRIL	CLASSES	DATE	PAGE
AI: Is It a New Frontier for Linguistic Justice?	4	4/2	45
Lessons in Diversity from a Prison Classroom (S)	1	4/2	47
Shakespeare: Man and Plays	4	4/8	54
A "City's Conscience": The Life and Career of Josephine Gomon (S)	1	4/19	61
The Bentley Historical Library: Where Michigan's History Lives (S)	1	4/29	51
The Bee Lady Talks (S)	1	4/30	42
MAY	CLASSES	DATE	PAGE
Jewish Humor—May Session	3	5/1	52
The Heartbeat of History (S)	1	5/6	50
Opposite Ends of the Style Spectrum: Architects and their Ann Arbor Area Works (S)	1	5/8	43
Shakespeare Contemporaries: Successors	4	5/8	55

JANUARY

REMINDER

TO-DO'S

FEBRUARY

REMINDER

TO-DO'S

MARCH, APRIL & MAY

REMINDER

TO-DO'S

Volunteer Recognition List

You strive towards making a difference. Your passion and energy are unparalleled, and we respect your spirit of volunteerism immensely. Thank you for being so selfless and for impacting so many in whose lives you make a tangible difference. Volunteers like you make the OLLI-UM world go round.

Faye Askew King
Karen Bantel
Jeff Barnett
Richard Barron
Bernie Beach
Ginny Bentz
Jill Binkley
Ron Bogdasarian
John Bohn
Lynn Boyer
Carol Brody
Tom Burroughs
Alice Carter
Donna Clack
Judy Cohen
Barbara Comai
Natalie Davidson
John Dorcey
Gloria Edwards
Emily Eisbruch
Avi Eisbruch
Mary Ellen Hoy
Tracie Engel
Lily Ferguson
Annette Fisch
Susan Fisher
Bruce Friedman
Ron Frisch
Richard Galant
Jerry Gardner
Richard Garrett
Bev Geltner
Hank Greenspan
Linda Grekin
Will Hawk

Georgiann Henritz
Sigrid Hermon
Joan Homyak
Alice Horning
Gregory Humbel
Larry Imerman
Lori Jordan
John Kelly
Freddi Kilburn
Zoe Koosis
Gerald Lapidus
Carol Levin
Rudi Lindner
Stuart Lockman
Jim MacBain
Linda McCrea
Barbara McLelland
Bette Michael
Bill Milne
Sue Mudrick
Sally Mukherjee
Deb Mukherjee
Claire Murray
Joan Nuxoll
Marjorie Oliver
Camille Orso
Al Paas
Priscilla Parker
Carol Pollack-Rundle
Susan Pollans
Anne Preston
Ruth Primas
Craig Ramsay
Helaine Reid
Tim Richards

Bill Roberts
Bob Rorke
Frances Schultz
Miriam Shaw
Leo Shedden
Cliff Sheldon
Mary Sherrill
Sylvia Shippey
Chris Siehl
Stu Simon
Marta Skiba
Terry Smith
Beth Spencer
Jane Spinner
Carol Standardi
Craig Stephans
Ann Tomlanovich
Debbie Torch
Cecilia Trudeau
Claire Turcotte
Esther Ullman
Debbie Upton
Rebecca Van Dyke
Lonnie Vitale
Marie Vitale
Tuffin Wagner
Julie Walker
Carolyn Weiner
Fran Weinstein
Cyril White
Mike Wixom
Katherine Woo
Kate Zoeger

SAVE THE DATE

M MICHIGAN MEDICINE
UNIVERSITY OF MICHIGAN



BIG HEARTS FOR SENIORS

Big Hearted Stories: Love Stories

MAY 30, 2024

7:00 PM EDT | Lydia Mendelssohn Theatre

Join us for a live performance as we celebrate our 19th anniversary. A special evening of storytelling, entertainment, VIP reception, silent auction, and more!

The event will feature emcee, **Vic Strecher, MD, PhD**, Professor, U-M School of Public Health and featured storyteller, **John U. Bacon**, a best-selling author.



APPLY TO BECOME A STORYTELLER!

Do you have a story to tell? Big Hearts for Seniors is searching for storytellers to tell their true stories using the theme, "Love Stories."

Storyteller submissions are being accepted online

December 1, 2023 - March 1, 2024.

For more information, visit us online: michmed.org/bhs



Big Hearts for Seniors Benefits

Ann Arbor Meals on Wheels
Housing Bureau for Seniors

Osher Lifelong Learning Institute
Silver Club Memory Programs

Turner African American Services Council
Turner Senior Wellness Program

Turner Geriatrics Community Programs

Turner Senior Wellness Program

Enhancing quality of life for older adults and their families.

- Healthy living presentations support groups, cooking demonstrations, exercise activities, blood pressure screening, and more
- Medicare counseling and assistance with Advance Directives
- Therapeutic writing group, weekly bridge and chess, and special events

Questions:

tswp.info@umich.edu
(734) 998-9353

Silver Club Memory Programs

A safe, stimulating environment for older adults with mild to moderate memory loss allowing caregivers time away to recharge

- Music, art, and other stimulating activities
- Professionally trained staff with backgrounds in social work, fine arts, music, and recreation therapy
- Cost is based on ability to pay

Questions:

germedsilverclub@umich.edu
(734) 998-9352

Turner African American Services Council (TAASC)

Helping to advance the wellness, health education, and health care for diverse and underserved older adults. Free and open to the public.

Upcoming Programs

- **Dr. Martin Luther King, Jr. Day Celebration My Vote Counts!**
Saturday, January 27, 2024
1pm-3:30 pm
Location:
Bethel A.M.E. Church,
900 John A Woods Dr.,
Ann Arbor MI 48105

Questions:

pageja@med.umich.edu
(734) 998-7409



Michigan Medicine's Geriatrics Center provides community programs to help seniors lead healthy, active, and enriched lives. The programs are available to all older adults in the community. *To learn more about these programs and others, visit us online:*

medicine.umich.edu/geriatrics-community-programs





MICHIGAN MEDICINE
UNIVERSITY OF MICHIGAN

Turner African American Services Council (TAASC)



Bethel A.M.E.
C H U R C H



DR. MARTIN LUTHER KING, JR. DAY CELEBRATION MY VOTE COUNTS!

Keynote speaker: TBD

**Saturday, January 27, 2024
1 PM - 3:30 PM**

**info.taasc@umich.edu
michmed.org/taasc**

**Bethel A.M.E. Church
900 John A. Woods Dr.
Ann Arbor, MI 48105**

REGISTRATION

**<https://bit.ly/taascmlk24>
or call
734-998-7409**



**Ann Arbor Area
Community Foundation**



SUPPORT OUR OLLI, SPONSOR A LECTURE!

Do you have a special interest in one of our upcoming lecture topics? Do you want to honor someone special to you? Then please consider becoming a sponsor of one of OLLI's lectures or other programs through the OLLI Lecture Sponsorship Program! As OLLI expands its programming to meet member need, donations are critical to OLLI's sustainability for today and into the future.

SPONSORSHIP OPPORTUNITIES

- Sponsor an Individual Lecture for \$500-one sponsorship per lecture
- Sponsor an entire Thursday Lecture Series (6 lectures) for \$2,500

Interested? Contact Ryan Luttermoser at (734) 998-9351 or lutterrj@med.umich.edu

"It has been my pleasure to sponsor several lectures for OLLI members. I have always enjoyed adding to my knowledge base and OLLI programming is the perfect way for me to continue doing this in my retirement. OLLI offers invaluable programming - educational, social, thought-provoking and fun opportunities abound. A sponsorship is my way of providing a heartfelt thank-you while also being able to highlight programs of personal interest to me. Please consider joining me and others in becoming an OLLI sponsor." ~ Susan Fisher



 **Washtenaw**
Community College

**Learn
something
new with a
class or two**



- Ballroom Dance
- Creative Writing
- Fitness and Well-Being
- Food, Drink and Cooking
- Foreign Languages
- Gardening
- History and Culture
- Painting
- And More

Make Washtenaw Community College your home for lifelong learning.

Visit wccnet.edu/enrichment-classes.



Osher Lifelong Learning Institute
at the University of Michigan
2401 Plymouth Road
Suite C, Room 1163
Ann Arbor, MI 48105-2193

Medicare from a name you know and trust.

Choosing a Medicare plan is a big decision, but it doesn't have to be, especially when you choose a plan that is owned by providers you know and trust.

With University of Michigan Health Advantage (HMO-POS) and PHP Medicare Advantage (PPO) plans, you have access to a statewide network of care at Michigan's top health systems and many benefits that go beyond Original Medicare such as:

- ✓ Dental from Delta Dental, hearing from TruHearing, and vision from EyeMed at no additional cost to you
- ✓ Flex card with a generous allowance you can use at CVS Pharmacy, Dollar General, Meijer, Walgreens, Walmart, and many more retailers on approved health and wellness items like bandaids, toothpaste, and vitamins
- ✓ Extra benefits like gym memberships, transportation services, meal benefits, and more



MICHIGAN HEALTH ADVANTAGE
A PHP MEDICARE HMO-POS PLAN

PHP Medicare Advantage

A PHP Medicare PPO Plan

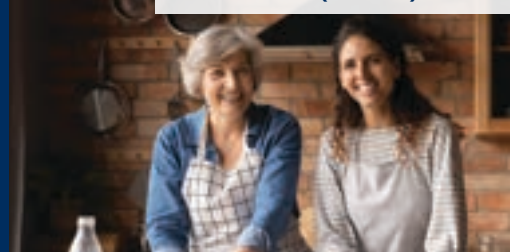


**Ready
to learn
more?**

Scan me!



U-MHealthAdvantage.com
833.245.7098 (TTY: 711)*



*8 a.m. to 8 p.m., seven days a week. You may reach a messaging service on weekends from April 1 to Sept. 30 and holidays. Please leave a message, and your call will be returned the next business day. PHP Medicare has HMO-POS and PPO plans with a Medicare contract. Enrollment in PHP Medicare depends on contract renewal. PHP Medicare complies with applicable Federal civil rights laws and does not discriminate on the basis of race, color, national origin, age, disability, or sex. ATENCIÓN: si habla español, tiene a su disposición servicios gratuitos de asistencia lingüística. Llame al 844.529.3757 (TTY: 711).

Y0169_24-2246_M

ملحق: إذا كنت تتحدث العربية، فإن خدمات المساعدة اللغوية متوفرة لك. يرجى ترك رسالة، وسوف يتم الرد عليك في أقرب وقت ممكن. 844.529.3757 (TTY: 711) اتصل بالخدمة والخدمة.